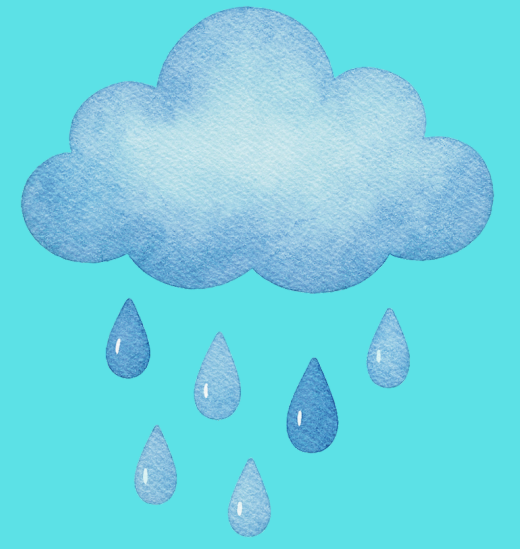




DENMAN WEEKLY NEWSLETTER



NOVEMBER 28, 2025

Dear Families,

It is raining, it is pouring, and we all go outside for recess almost every day. Please send your child to school with rain gear so they can stay dry and warm outside. A spare set of socks and pants at school is also helpful.

The Craft Fair is coming up, check out the Taco Table volunteer opportunity and the Farm 2 Family tea towels.

We will be having our Winter Concert in the Community Hall again this year, please invite your friends and neighbours to join us!



PAC

Parent Advisory Council

***Next PAC meeting is
December 9th, at 5:30,
in the school library.
All parents of Denman
students are welcome***

***Volunteers needed for
the Taco Table at the
Craft Fair-see poster***

Upcoming

**Dec 2-Lunch- Shrimp Rice
Bowls**

Dec. 3-Lunch-Wraps

**Dec. 4-Lunch-Chicken Wings
and Fries**

Dec. 6-7 Craft Fair

Dec.9 PAC Meeting, 5:30

**Dec. 12-Winter Concert, 5:30
Community Hall**

DICES NEWS

WE HAVE AFTER SCHOOL PAINTING THE NEXT TWO TUESDAYS,
FOR KIDS GRADES 5 AND UP AND ADULTS. NO EXPERIENCE
NECESSARY, ALL MATERIALS SUPPLIED, AND KIDS ARE HALF
PRICE!



SIGN UP BELOW

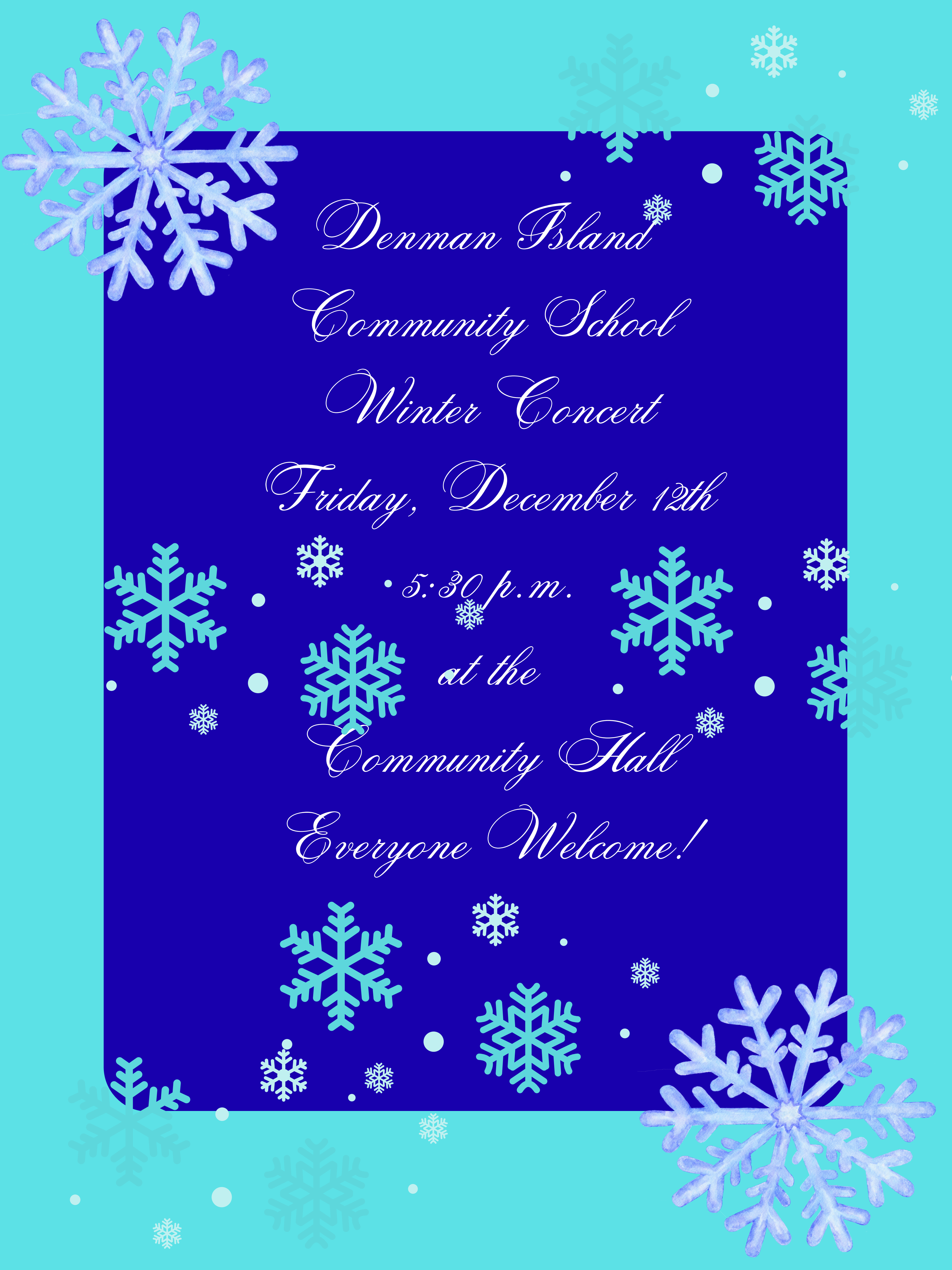
FESTIVE AFTER SCHOOL PAINTING

The PAC is seeking volunteers to join the
Taco Table team at the Craft Fair!



Volunteers needed for:
Menu planning and signs
Prep and cooking
Setup and takedown
Serving tacos at the Fair

email Becky at rcnykwest@gmail.com to volunteer!



Denman Island
Community School
Winter Concert
Friday, December 12th
• 5:30 p.m.
at the
Community Hall
Everyone Welcome!

Farm 2 Family

Hi Everyone,

We now have the completed tea towels and we are preparing for the Christmas Market. They are so darn cute. We just love them and are so grateful for your enthusiasm and participation.

Families are welcome to pre-buy a tea towel. The cost is \$20 and money can be emailed to Farm to Family using the following email:

acctfarm2family@gmail.com

Thank you all again so much for your time and efforts,

Warmest,

Kate and Joni and the whole Farm to Family team

