

Hornby Island School Replacement Educational Design Meeting

January 8th, 2020



The former school



How did we get here ...

- Aug 2018 – Top priority is a temporary space for Hornby students.
- Early Sep 2018 – begin planning and design of a temporary modular school and assessment for demolition of fire damaged school;
- Late Sep/early Oct 2018 – begin school replacement project. Consulting team hired and work begins on Project Definition Report (PDR)

How did we get here ...

- Jan 2019 – Modularity is on the Island
- Feb 2019 – Temporary school opens
- Feb 2019 – PDR submitted to Ministry of Education Capital Branch
- Mar 2019 – Ministry review of damaged school and temporary facility. Detailed list of questions from MOE related to PDR
- Mar to May 2019 – revisions, questions answered, further revisions leading to final submission

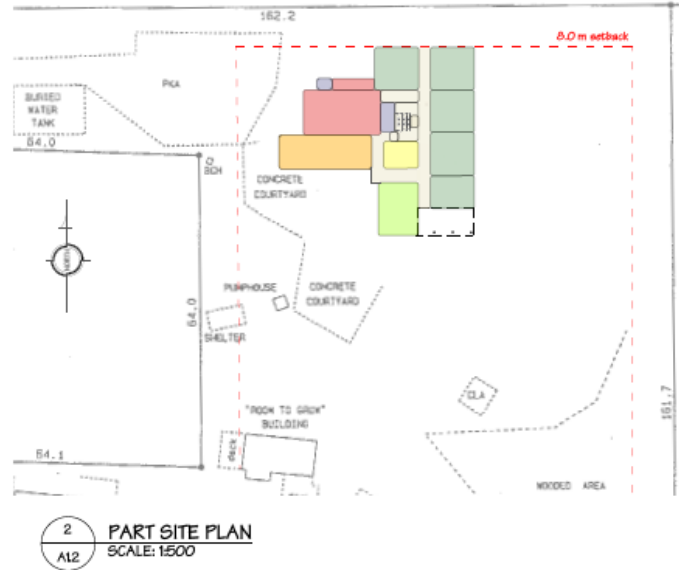
How did we get here ...

- Summer and early Fall 2019 – Ministry review of the PDR and recommendation to Treasury Board
- Oct 2019 – Ministry approval of project (embargoed)
- Nov 2019 – RFP for Construction Management firm posted to BC Bid
- Dec 2019 – Minister of Education announces new school funding
- Jan to Mar 2020 – community consultation and educational design.

School area breakdown

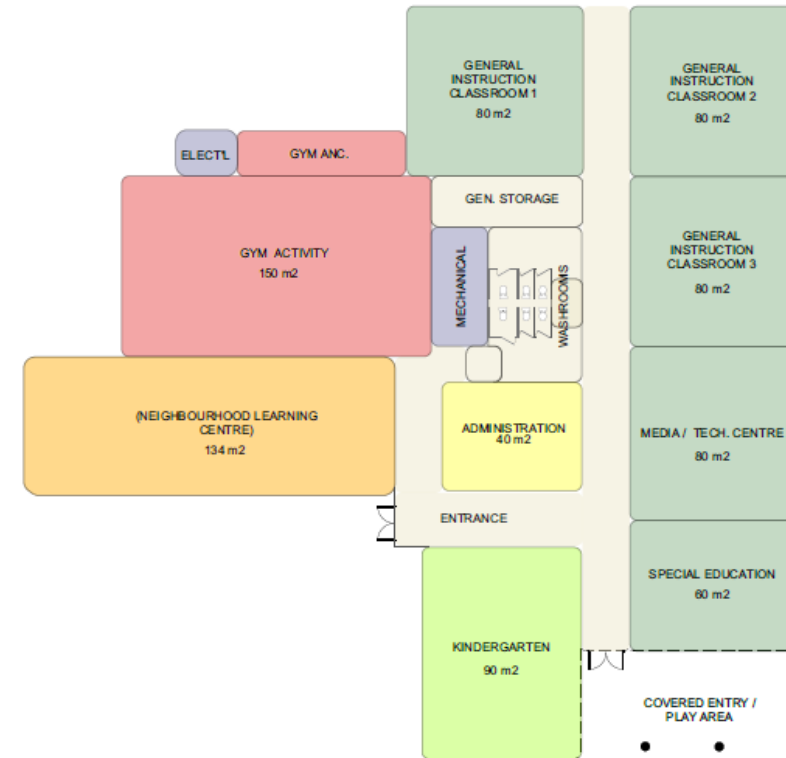
- Ministry of Education formula based on student numbers (75)
- 895 square meters normal/134 square meters of NLC
- Must have four classrooms
- Must have Special Education space
- Must have a learning commons
- Must have a gym

Indicative design (Scenario 2)



| OPTION 2 | Space Functions | Allowed | New |
|----------|--|----------------|----------------|
| | ADMIN / HEALTH | 40 m2 | 40 m2 |
| | GENERAL INSTRUCTION | 240 m2 | 240 m2 |
| | SPECIAL EDUCATION / MULTIPURPOSE | 60 m2 | 60 m2 |
| | MEDIA-TECH. CENTRE | 80 m2 | 80 m2 |
| | GYM ACTIVITY | 150 m2 | 150 m2 |
| | GYM ANCILLARY | 20 m2 | 20 m2 |
| | MECHANICAL / ELECTRICAL | 25 m2 | 25 m2 |
| | DESIGN SPACE | 170 m2 | 170 m2 |
| | GENERAL STORAGE | 20 m2 | 20 m2 |
| | TOTAL | 805 m2 | 805 m2 |
| | KINDERGARTEN | 90 m2 | 90 m2 |
| | NEW LEARNING CENTRE (SHARED COMMUNITY SPACE) | 134 m2 | 134 m2 |
| | TOTAL | 1029 m2 | 1029 m2 |

NEW CONSTRUCTION (APPROX) = 1029 M2



The Funding

- The Price Tag = capital costs + risk reserve
- Scenario 2 (Full Replacement). **\$9,800,355**
- When 9.8 million is not really 9.8 million.
 - Construction budget = **6** million
 - Rural location factor = **2.3** million
 - Risk reserves = **1.5** million

Up front issues:



- Time is of the essence;
- Natural History Museum;
- NLC Definition;
- Garden and rainwater collection (sustainability)
- Deconstruction – sharing with the community; and
- What is your lane!

Proposed construction timeline

- Oct 2019 to Mar 2020 – Design
- May 2020 – Design Development complete.
- June to Aug 2020 – Complete construction drawings and tender packages. All disciplines.
- Sep to Oct 2020 - Tender period and award
- Nov 2020 – Construction begins
- Mar 2022 – Project completion

Considerations and what's next

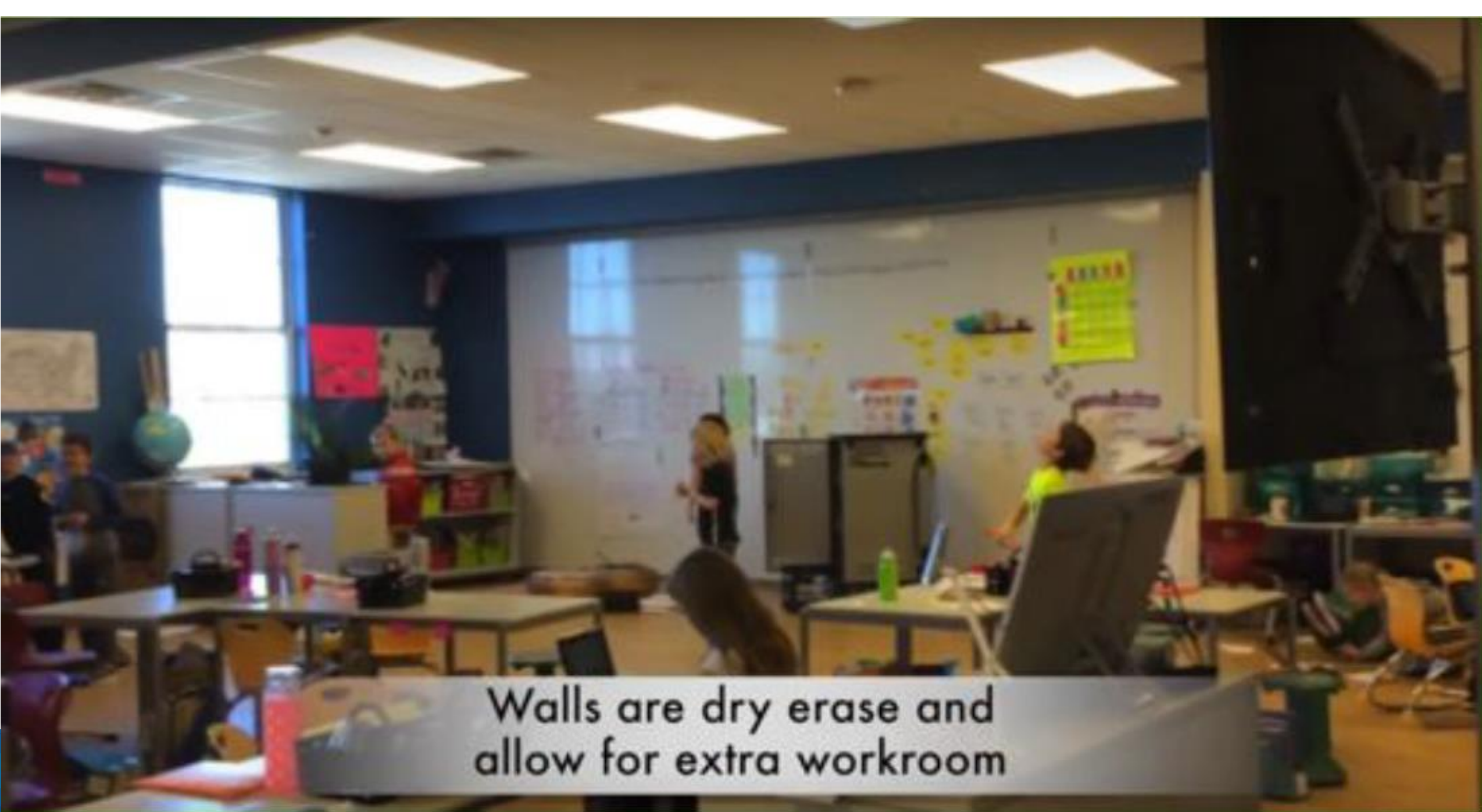
- The work done by this committee in the next ten weeks is key...
- Brad Shuya will review the building and 21st century learning space concepts; and
- Thanks to all participating. It will be fun!

21st Century schools

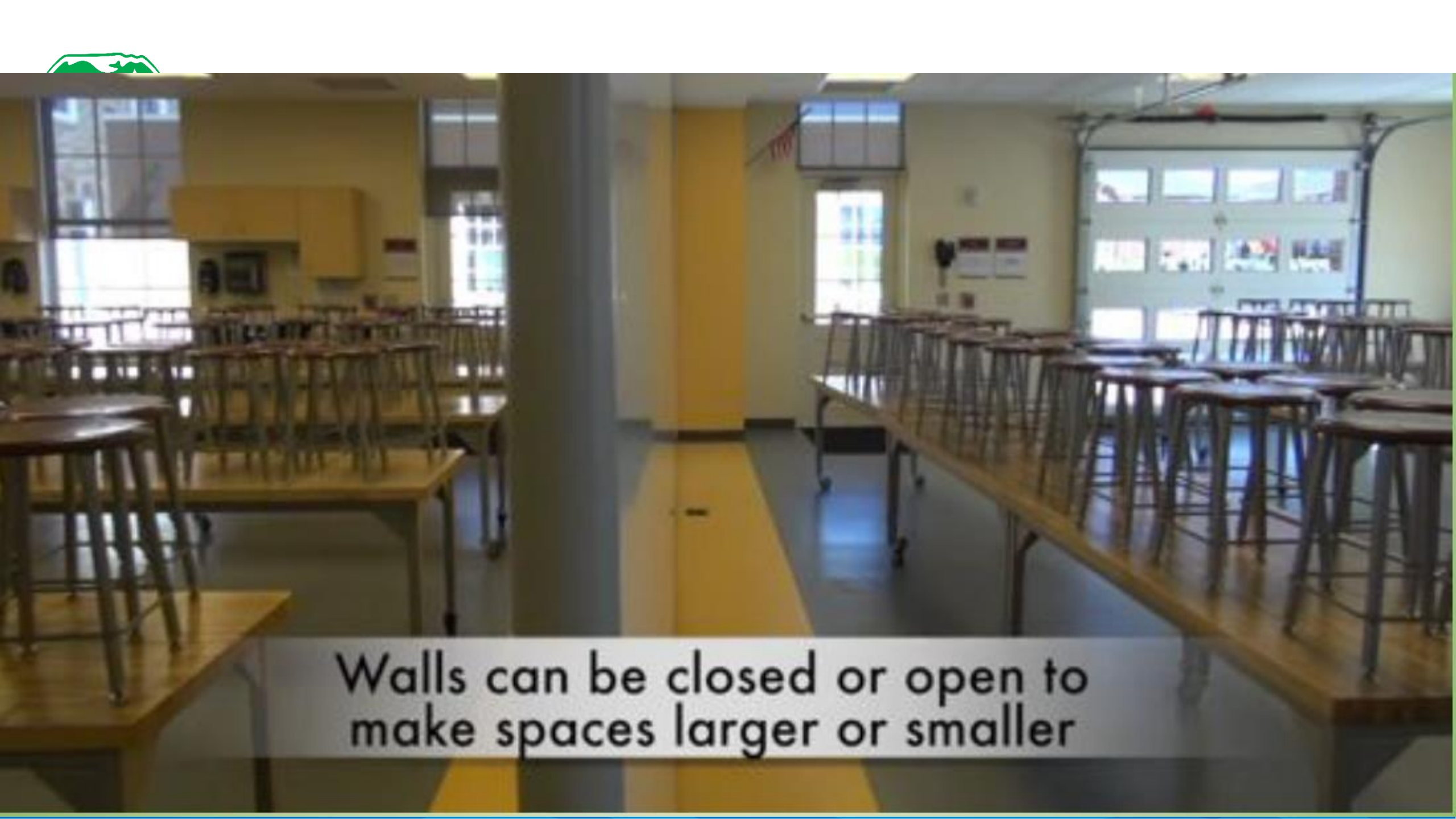
Learning spaces are aesthetically pleasing, creative, flexible, sustainable, cost- effective, include outdoor learning environments and are all technology infused. Movable furniture and walls allow easy change, and accommodations for large and small group work, peer-to-peer learning and individual exploration.

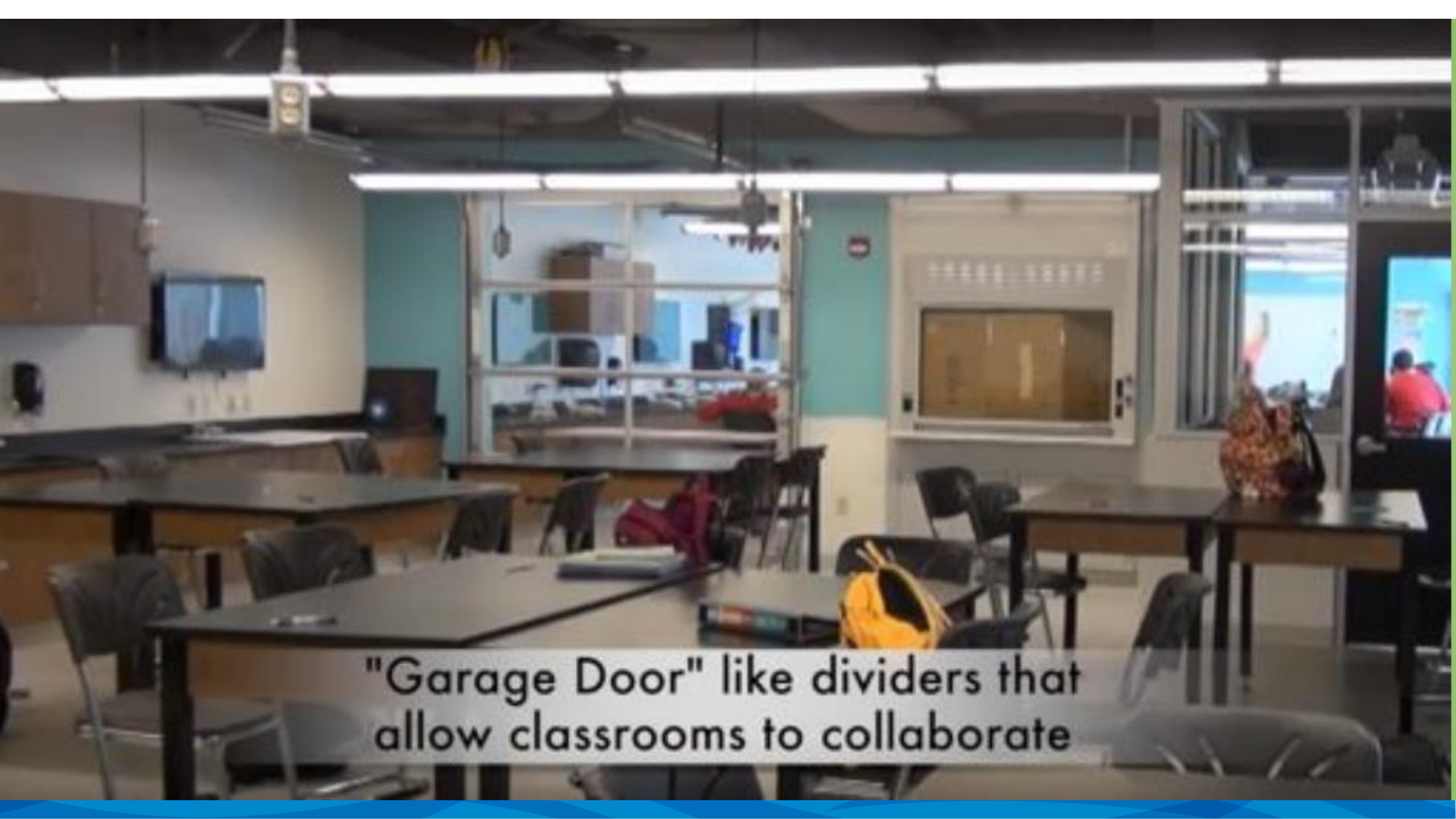


Classrooms with flexible seating to allow for collaboration and creation



Walls are dry erase and
allow for extra workroom





"Garage Door" like dividers that
allow classrooms to collaborate



Students have space outside of the traditional classroom to work; the doors allow for the sense of inclusion to the room

21st Century schools





Comox Valley Schools

A Community of Learners

INNOVATIVE • INQUISITIVE • INCLUSIVE



2 PART SITE PLAN
SCALE: 1:500

| OPTION 1 | Space Functions | Allowed | New |
|----------|--|---------------------|---------------------|
| | ADMIN / HEALTH | 40 m ² | 40 m ² |
| | GENERAL INSTRUCTION / PROJECT SPACE | 240 m ² | 240 m ² |
| | SPECIAL EDUCATION / MULTI-PURPOSE | 60 m ² | 60 m ² |
| | MEDIA-TECH CENTRE | 80 m ² | 80 m ² |
| | GYM ACTIVITY | 150 m ² | 150 m ² |
| | GYM ANCILLARY | 20 m ² | 20 m ² |
| | MECHANICAL / ELECTRICAL | 25 m ² | 25 m ² |
| | DESIGN SPACE | 170 m ² | 170 m ² |
| | GENERAL STORAGE | 20 m ² | 20 m ² |
| | TOTAL | 805 m ² | 805 m ² |
| | KINDERGARTEN | 90 m ² | 90 m ² |
| | NEW LEARNING CENTRE (SHARED COMMUNITY SPACE) | 134 m ² | 134 m ² |
| | TOTAL | 1029 m ² | 1029 m ² |

NEW CONSTRUCTION (APPROX) = 1029 M²



1 FLOOR PLAN - Option 1
SCALE: 1:100

SCHOOL DISTRICT #71
HORNBY ISLAND COMMUNITY SCHOOL
2100 Solland Rd, Hornby Island, B.C.
SCHEMATIC DESIGN PHASE

The design and construction of this school building is a complex task. It requires a high level of coordination and communication between all stakeholders. The design team has worked closely with the school district and the community to ensure that the building meets the needs of the school and the community.

BSA
BRADLEY SHUYA
ARCHITECT INC.
100 Maple St, Victoria BC
250.377.8880 • 1.250.377.8880
bsa@bsa-architect.com and bsa.ca
www.bsa-architect.com and bsa.ca

OPTION 1
FLOOR PLAN

Date: Dec. 23, 2019
AS NOTED
AP
19-21

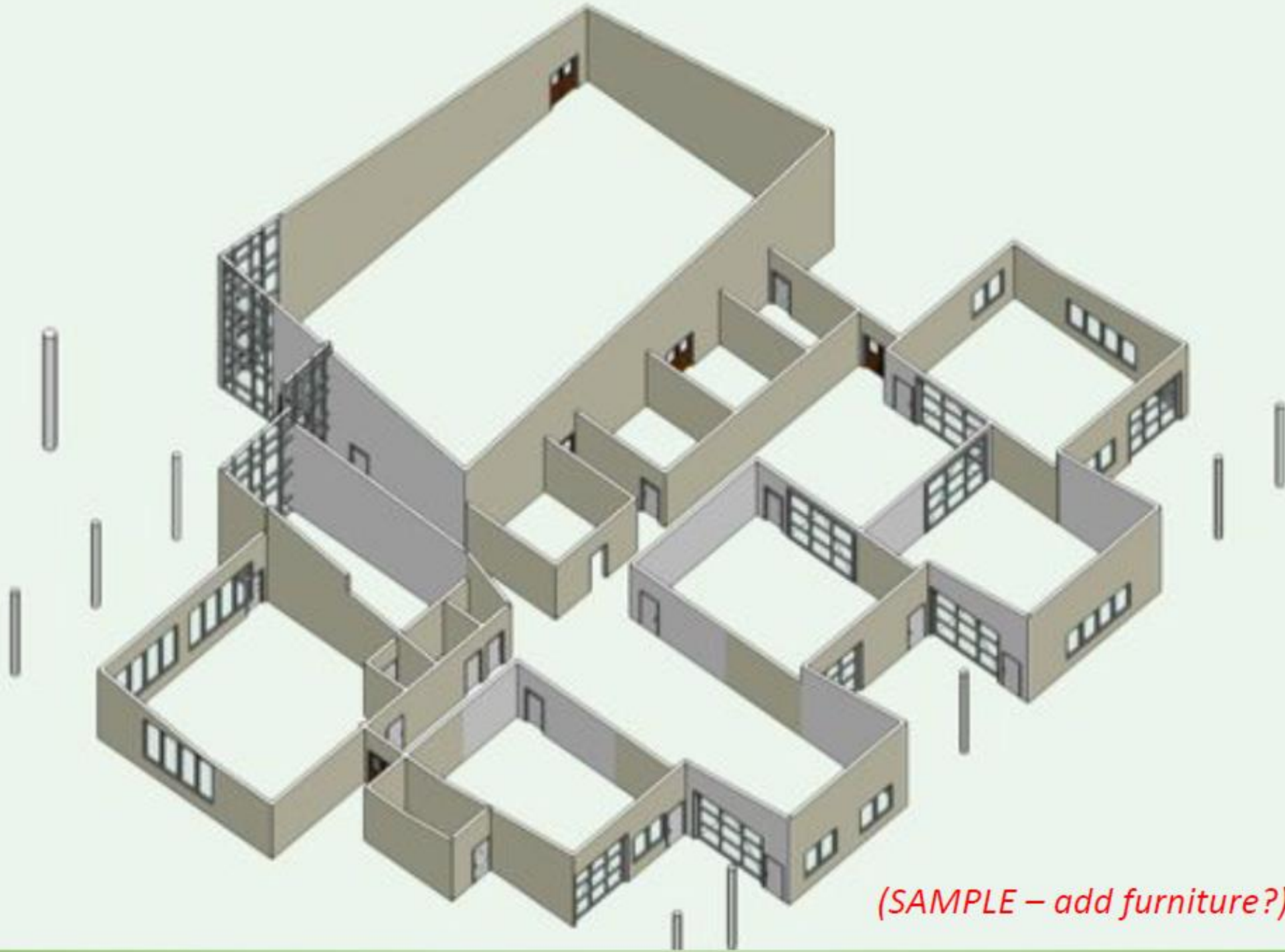
A1.0



Comox Valley Schools

A Community of Learners

INNOVATIVE • INQUISITIVE • INCLUSIVE



(SAMPLE – add furniture?)



1 View 1
All NTS



2 View 2
All NTS



3 South Elevation
All NTS



4 West Elevation
All NTS



Comox Valley Schools

A Community of Learners

INNOVATIVE • INQUISITIVE • INCLUSIVE

