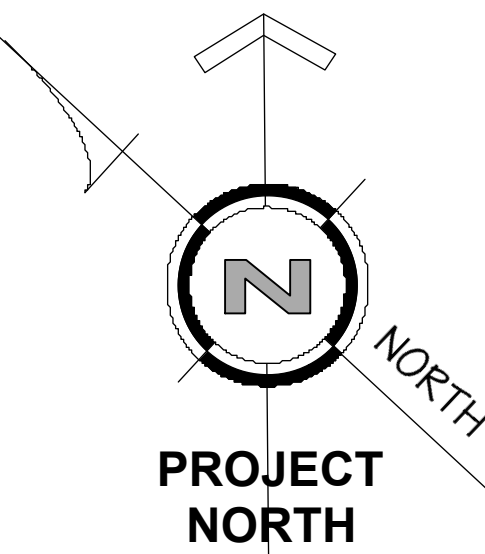
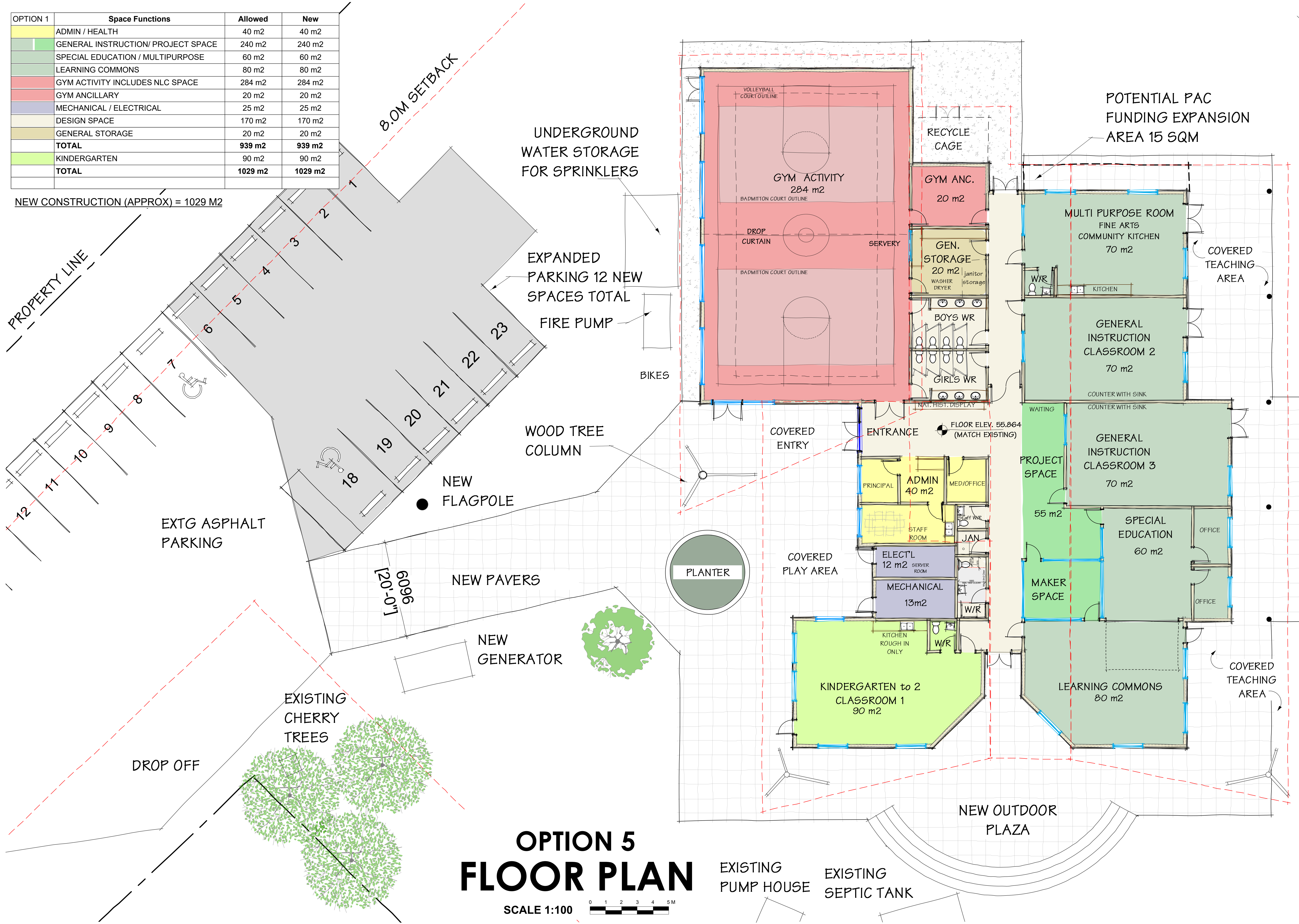


OPTION 1	Space Functions	Allowed	New
	ADMIN / HEALTH	40 m2	40 m2
	GENERAL INSTRUCTION/ PROJECT SPACE	240 m2	240 m2
	SPECIAL EDUCATION / MULTIPURPOSE	60 m2	60 m2
	LEARNING COMMONS	80 m2	80 m2
	GYM ACTIVITY INCLUDES NLC SPACE	284 m2	284 m2
	GYM ANCILLARY	20 m2	20 m2
	MECHANICAL / ELECTRICAL	25 m2	25 m2
	DESIGN SPACE	170 m2	170 m2
	GENERAL STORAGE	20 m2	20 m2
	<b>TOTAL</b>	<b>939 m2</b>	<b>939 m2</b>
	KINDERGARTEN	90 m2	90 m2
	<b>TOTAL</b>	<b>1029 m2</b>	<b>1029 m2</b>

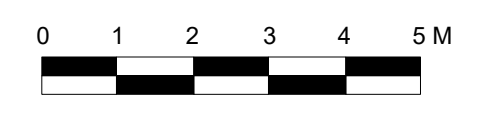
NEW CONSTRUCTION (APPROX) = 1029 M2



SCHOOL DISTRICT #71  
**HORNBY ISLAND COMMUNITY SCHOOL**  
 2100 Solland Rd, Hornby Island, B.C.  
 SCHEMATIC DESIGN PHASE

# OPTION 5 FLOOR PLAN

SCALE 1:100



**ASK-1**  
 Feb 13 2020