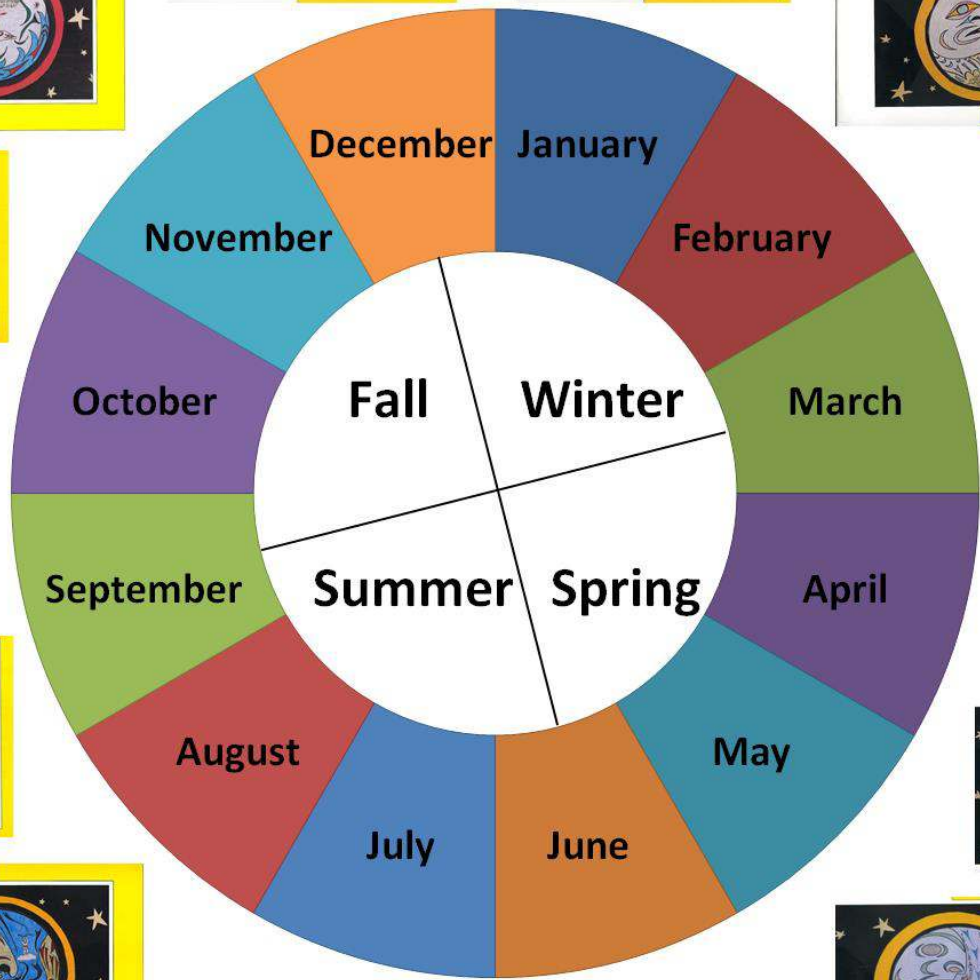
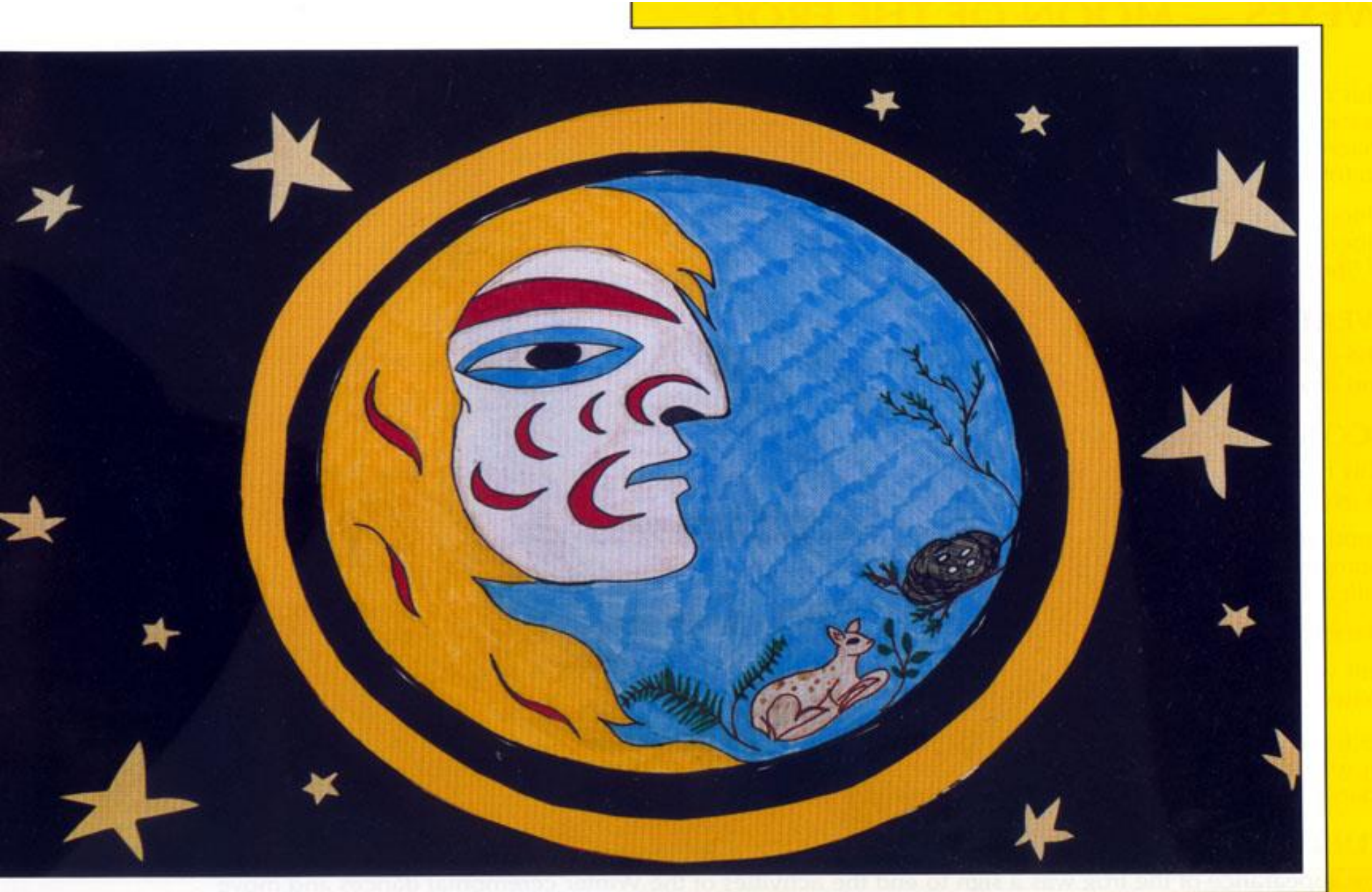


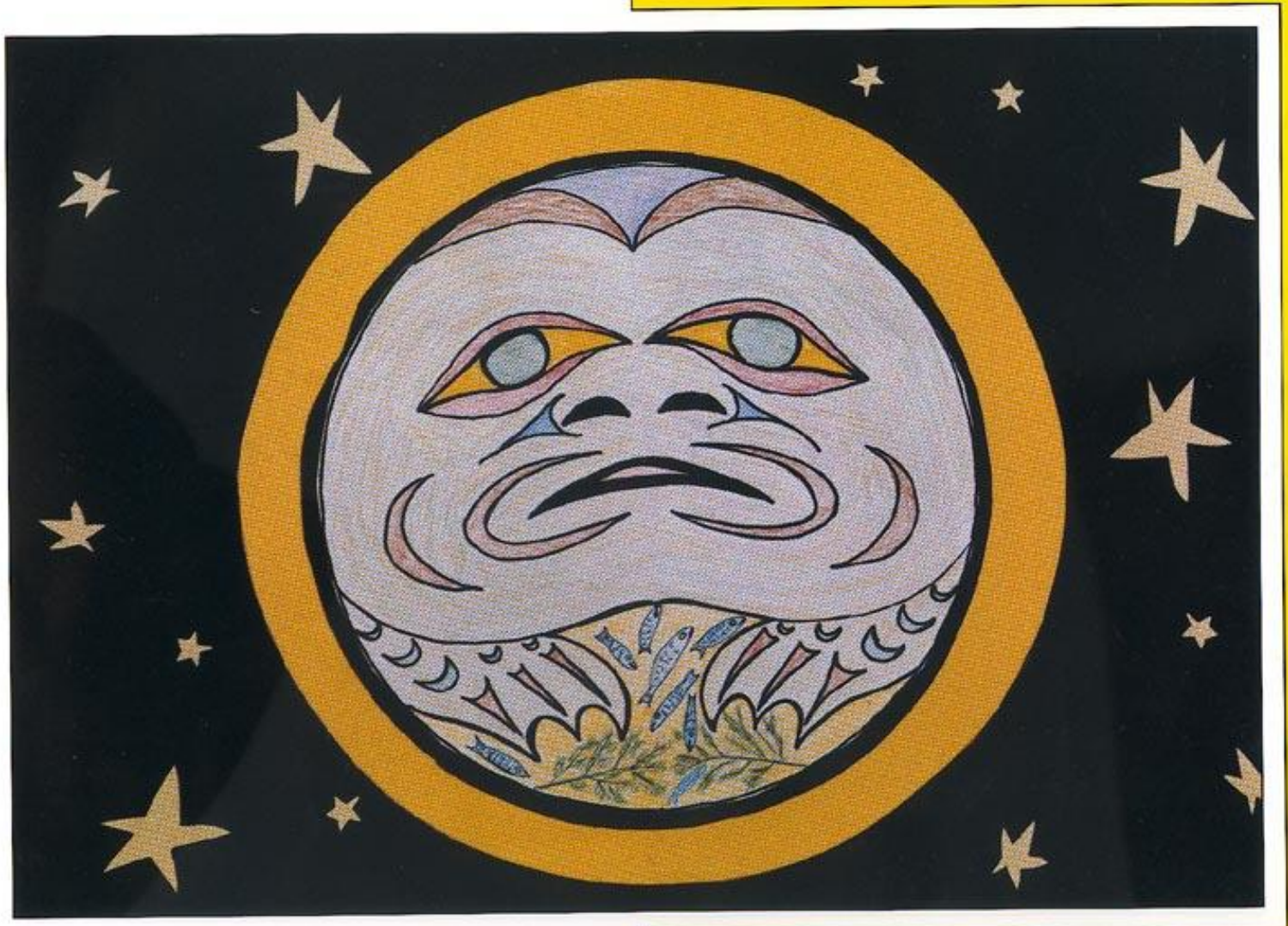
The Saanich Year



MOON OF THE CHILD



MOON OF THE FROG



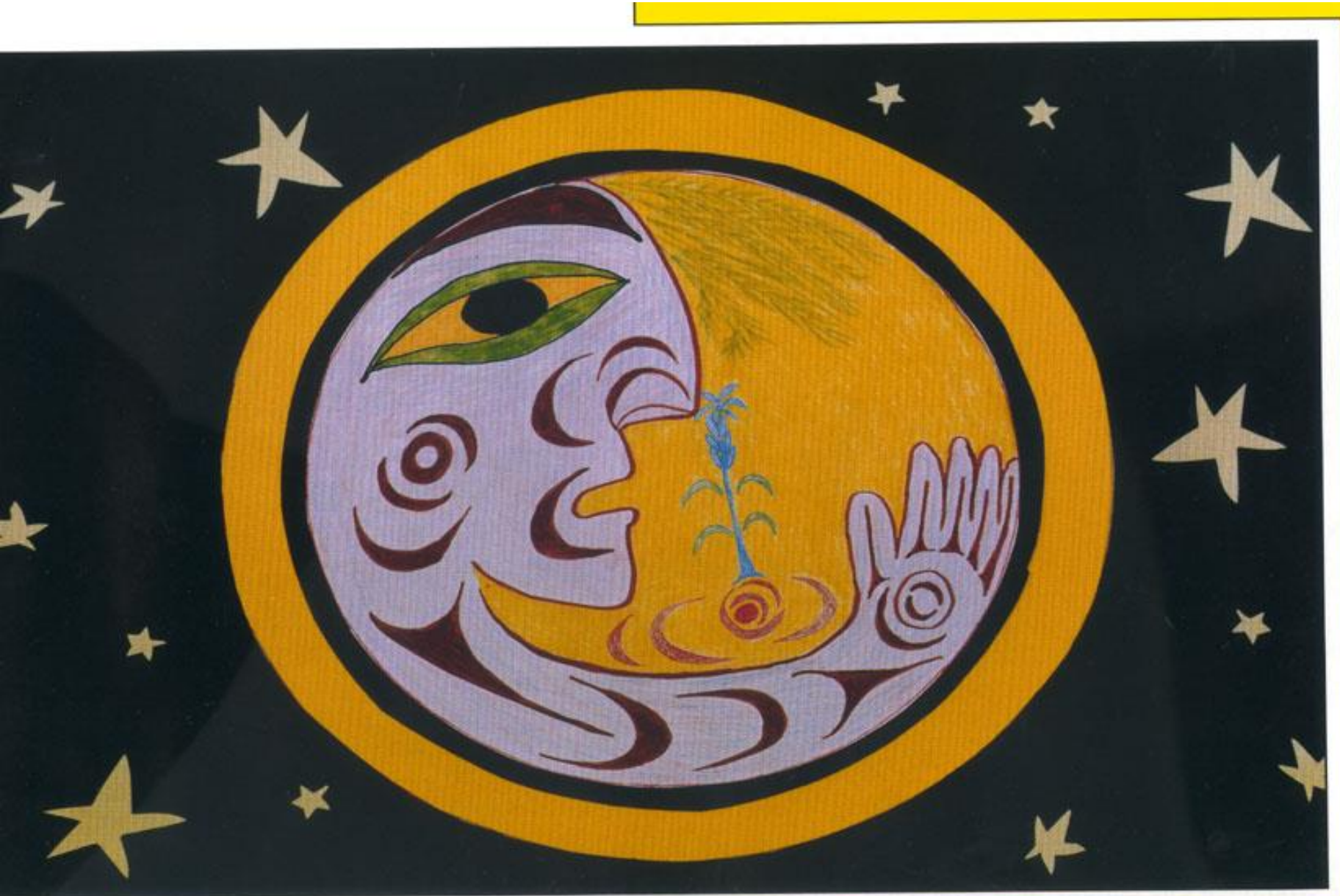
MOON OF OPENING HANDS/BLOSSOMING OUT MOON



BULLHEAD MOON



MOON OF CAMAS HARVEST/SEAWEED HARVEST



THE SOCKEYE MOON



HUMPBACK SALMON RETURN TO THE EARTH



THE COHO SALMON RETURN TO THE EARTH



THE DOG SALMON RETURN TO THE EARTH



THE MOON THAT TURNS THE LEAVES WHITE



MOON OF THE SHAKER OF THE LEAVES



MOON OF PUTTING YOUR PADDLE AWAY IN THE BUSH



THE ELDER MOON

