

Legend

- Invasive Species

Ecological Point of Interest

Enhancement Opportunities Point

Ditch
- Stream

Wetland

Parcels

SD71 Boundaries
- Environmentally Sensitive Area

Enhancement Opportunities

Streamside Protection and Enhancement Area

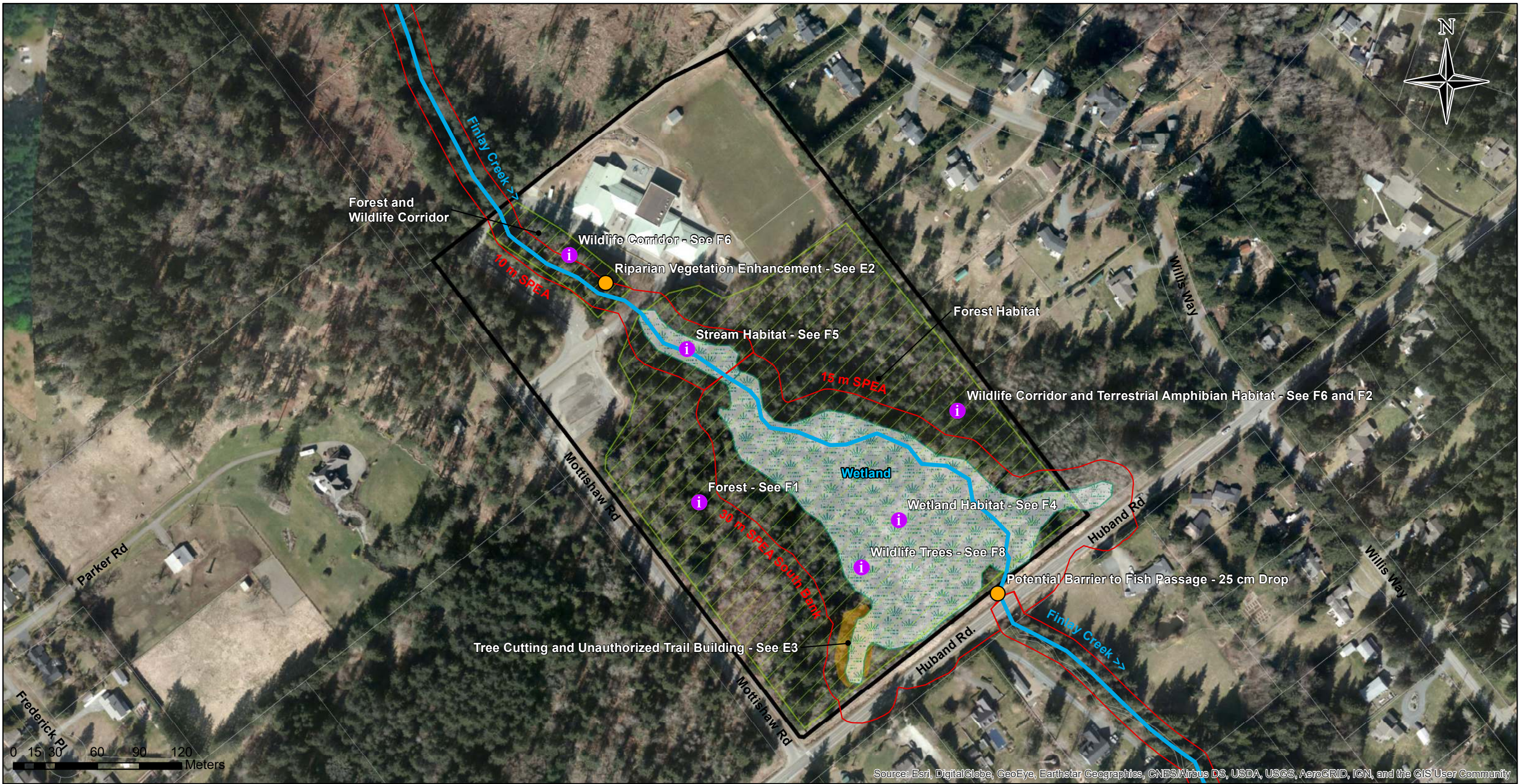
Project: <div>School District 71: Comox Valley Schools Environmental Inventory</div>		Page 1 of 24	
Site: <div>Miracle Beach Elementary</div>		Date: <div>March 15th, 2021</div>	Note: All linework approximate. Not for use or reproduction without consent from the author.
		Author: <div>C.O'Neill</div>	
		Projection: <div>UTM NAD83 Zn10N</div>	



Legend


- | | | |
|---------------------------------|-----------------|--|
| Invasive Species | Stream | Environmentally Sensitive Area |
| Ecological Point of Interest | Wetland | Enhancement Opportunities |
| Enhancement Opportunities Point | Parcels | Streamside Protection and Enhancement Area |
| Ditch | SD71 Boundaries | |


Project:	School District 71: Comox Valley Schools Environmental Inventory		Page 2 of 24	
	Site:	North Island Distance Education Navigate Academy		<div>Date: March 15th, 2021</div> <div>Author: C.O'Neill</div> <div>Projection: UTM NAD83 Zn10N</div> <div>Note: All linework approximate. Not for use or reproduction without consent from the author.</div> <div></div>






Source: Esri, DigitalGlobe, GeoEye, Earthstar Geographics, CNES/Airbus DS, USDA, USGS, AeroGRID, IGN, and the GIS User Community


Legend


-  Invasive Species



 Ecological Point of Interest

 Enhancement Opportunities Point


 Ditch
-  Stream


 Wetland

 Parcels

 SD71 Boundaries
-  Environmentally Sensitive Area

 Enhancement Opportunities

 Streamside Protection and Enhancement Area

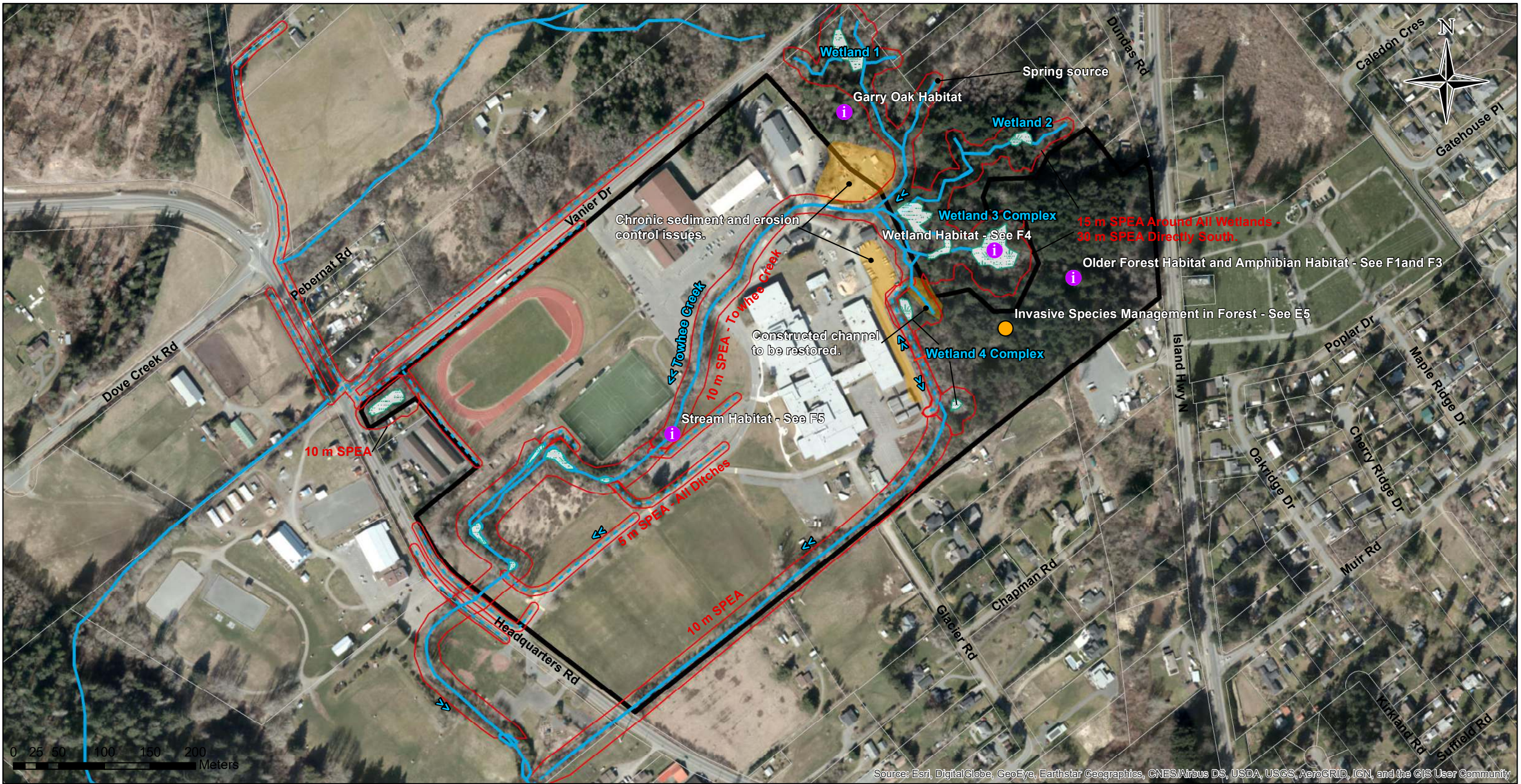
Project: <div>School District 71: Comox Valley Schools Environmental Inventory</div>		Page 3 of 24	
Site: <div>Huband Park Elementary</div>		Date: March 15th, 2021	Note: All linework approximate. Not for use or reproduction without consent from the author.
		Author: C.O'Neill	
		Projection: UTM NAD83 Zn10N	



Legend

- ✱ Invasive Species
- i Ecological Point of Interest
- Enhancement Opportunities Point
- Ditch
- Stream
- Wetland
- Parcels
- SD71 Boundaries
- Environmentally Sensitive Area
- Enhancement Opportunities
- Streamside Protection and Enhancement Area

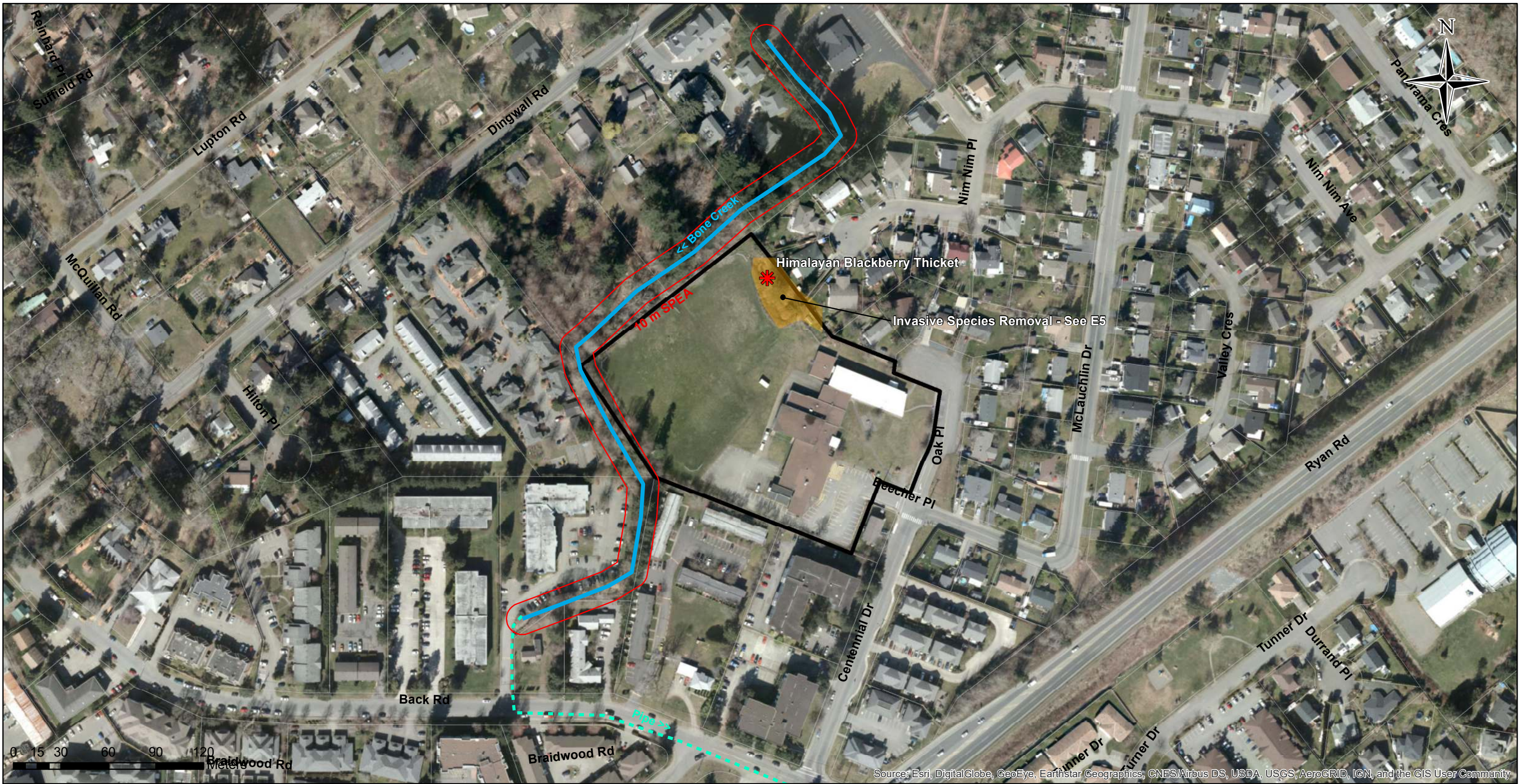
Project:		School District 71: Comox Valley Schools Environmental Inventory		Page 4 of 24	
Site:		Queneesh Elementary		Date: March 15th, 2021	Note: All linework approximate. Not for use or reproduction without consent from the author.
				Author: C.O'Neill	
				Projection: UTM NAD83 Zn10N	



Legend

- | | | |
|---------------------------------|-----------------|--|
| Invasive Species | Stream | Environmentally Sensitive Area |
| Ecological Point of Interest | Wetland | Enhancement Opportunities |
| Enhancement Opportunities Point | Parcels | Streamside Protection and Enhancement Area |
| Ditch | SD71 Boundaries | |

Project:	School District 71: Comox Valley Schools Environmental Inventory		Page 5 of 24	
	Site:		Date: March 15th, 2021	Note: All linework approximate. Not for use or reproduction without consent from the author.
Georges P. Vanier Secondary			Author: C.O'Neill	
			Projection: UTM NAD83 Zn10N	



Legend


- Invasive Species
- Ecological Point of Interest
- Enhancement Opportunities Point
- Ditch
- Stream
- Wetland
- Parcels
- SD71 Boundaries
- Environmentally Sensitive Area
- Enhancement Opportunities
- Streamside Protection and Enhancement Area

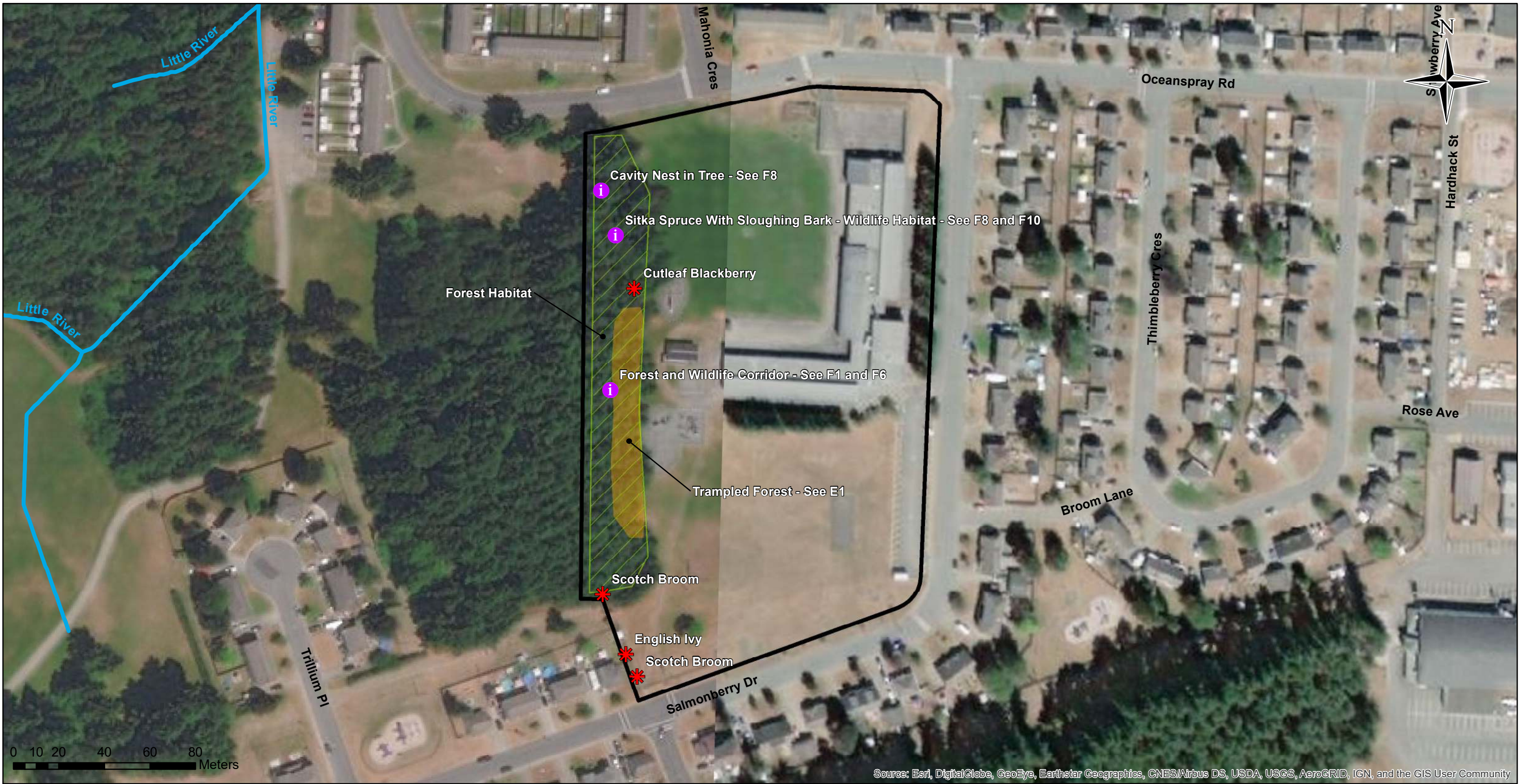
Project:	School District 71: Comox Valley Schools Environmental Inventory		Page 6 of 24	
	Site:	Glacier View Secondary Centre		Date: March 15th, 2021 Author: C.O'Neill Projection: UTM NAD83 Zn10N
				Note: All linework approximate. Not for use or reproduction without consent from the author.



Legend


- ✱ Invasive Species
- i Ecological Point of Interest
- Enhancement Opportunities Point
- Ditch
- Stream
- Wetland
- Parcels
- SD71 Boundaries
- Environmentally Sensitive Area
- Enhancement Opportunities
- Streamside Protection and Enhancement Area

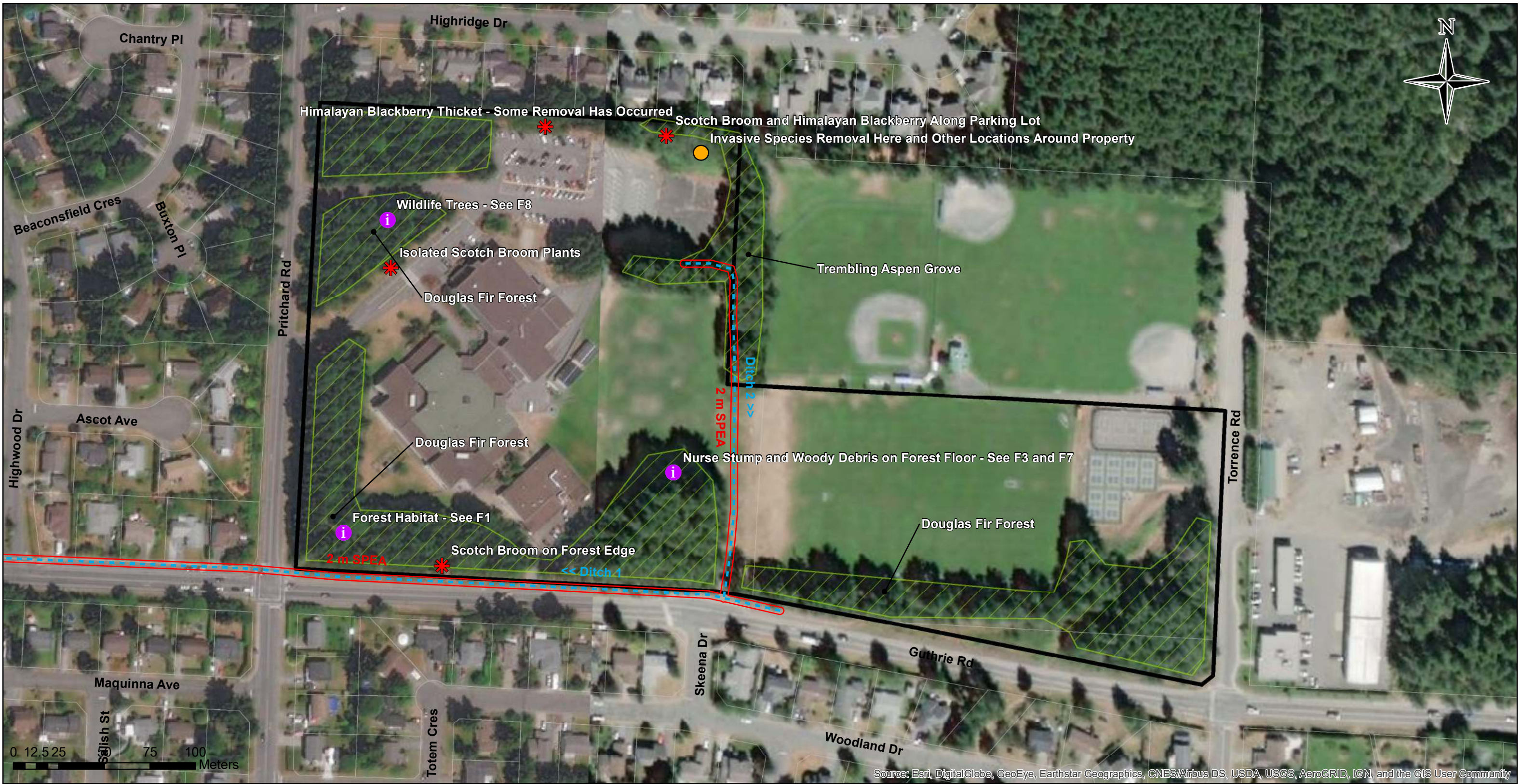
Project:		School District 71: Comox Valley Schools Environmental Inventory		Page 7 of 24	
Site:		Mark R. Isfeld Senior Secondary and Valley View Elementary		Date: March 15th, 2021	Note: All linework approximate. Not for use or reproduction without consent from the author.
				Author: C.O'Neill	
				Projection: UTM NAD83 Zn10N	



Legend

- ✱ Invasive Species
- i Ecological Point of Interest
- Enhancement Opportunities Point
- Ditch
- Stream
- Wetland
- Parcels
- SD71 Boundaries
- Environmentally Sensitive Area
- Enhancement Opportunities
- Streamside Protection and Enhancement Area

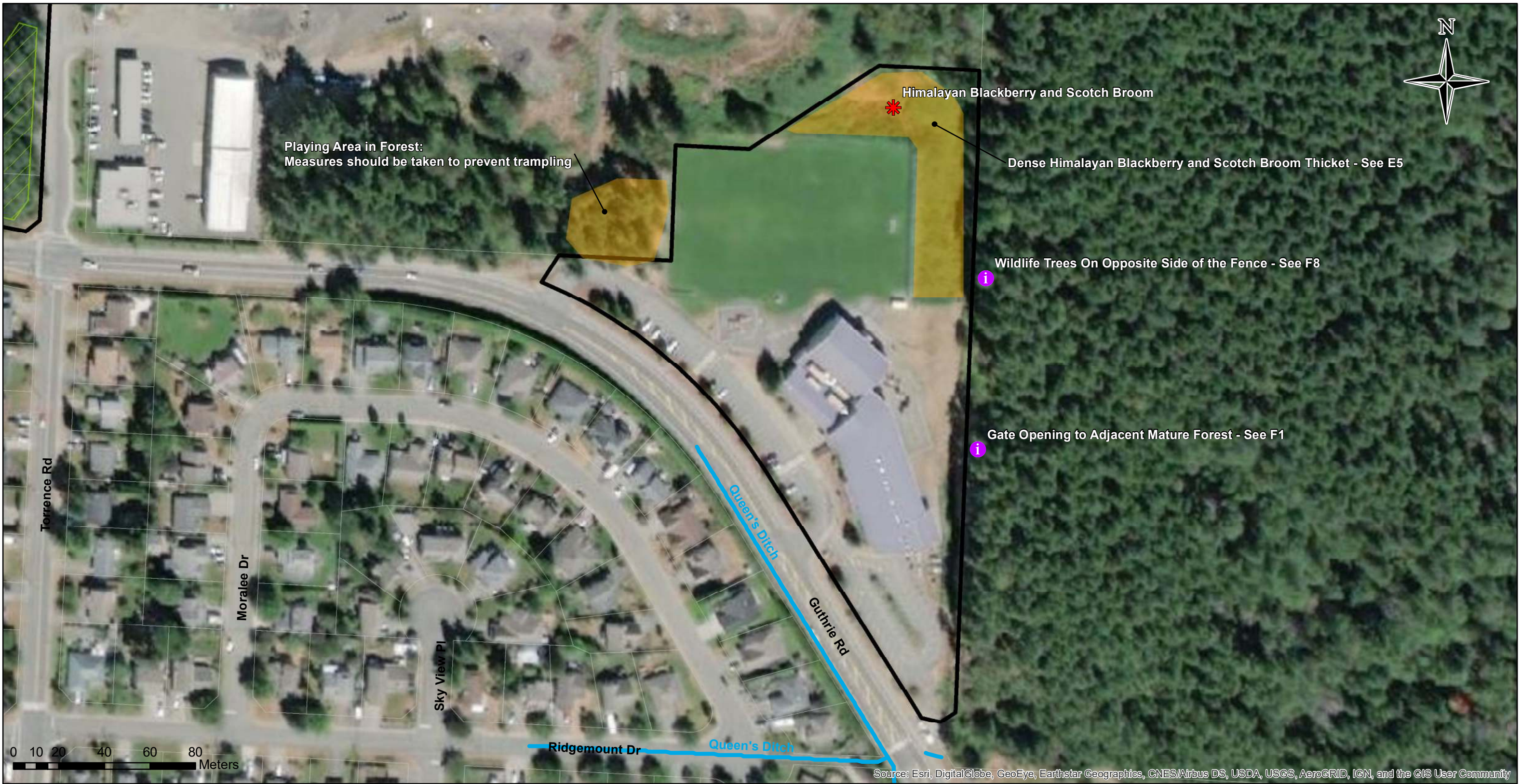
Project:		Page 8 of 24	
School District 71: Comox Valley Schools Environmental Inventory		Date: March 15th, 2021	Note: All linework approximate. Not for use or reproduction without consent from the author.
Site:		Author: C.O'Neill	
Airport Elementary		Projection: UTM NAD83 Zn10N	




Legend


- Invasive Species
- Ecological Point of Interest
- Enhancement Opportunities Point
- Ditch
- Stream
- Wetland
- Parcels
- SD71 Boundaries
- Environmentally Sensitive Area
- Enhancement Opportunities
- Streamside Protection and Enhancement Area


Project:		School District 71: Comox Valley Schools Environmental Inventory		Page 9 of 24	
Site:		Highland Secondary		Date: March 15th, 2021	Note: All linework approximate. Not for use or reproduction without consent from the author.
				Author: C.O'Neill	
				Projection: UTM NAD83 Zn10N	






Legend


-  Invasive Species



 Ecological Point of Interest


 Enhancement Opportunities Point


 Ditch
-  Stream


 Wetland

 Parcels

 SD71 Boundaries
-  Environmentally Sensitive Area

 Enhancement Opportunities

 Streamside Protection and Enhancement Area

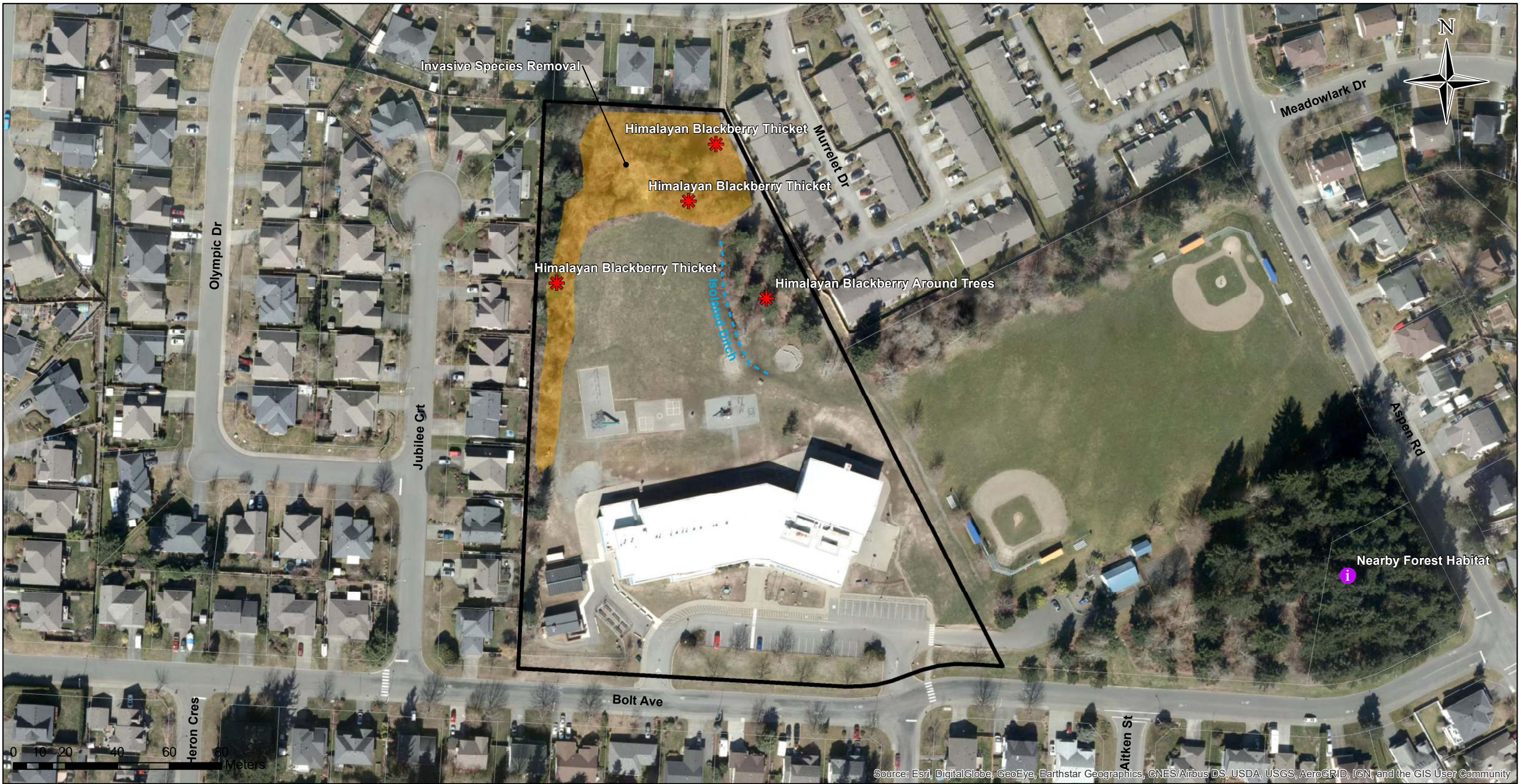
Project: <div>School District 71: Comox Valley Schools Environmental Inventory</div>		Page 10 of 24	
Site: <div>Brooklyn Elementary</div>		Date: March 15th, 2021	Note: All linework approximate. Not for use or reproduction without consent from the author.
		Author: C.O'Neill	
		Projection: UTM NAD83 Zn10N	




Legend


- Invasive Species
- Ecological Point of Interest
- Enhancement Opportunities Point
- Ditch
- Stream
- Wetland
- Parcels
- SD71 Boundaries
- Environmentally Sensitive Area
- Enhancement Opportunities
- Streamside Protection and Enhancement Area


Project:		Page 11 of 24	
School District 71: Comox Valley Schools Environmental Inventory		Date: March 15th, 2021	Note: All linework approximate. Not for use or reproduction without consent from the author.
Site: Ecole Robb Road		Author: C.O'Neill	
		Projection: UTM NAD83 Zn10N	






Legend


-  Invasive Species



 Ecological Point of Interest


 Enhancement Opportunities Point


 Ditch
-  Stream


 Wetland

 Parcels

 SD71 Boundaries
-  Environmentally Sensitive Area

 Enhancement Opportunities

 Streamside Protection and Enhancement Area

Project: School District 71: Comox Valley Schools Environmental Inventory		Page 12 of 24	
Site: Aspen Park Elementary	Date: March 15th, 2021		Note: All linework approximate. Not for use or reproduction without consent from the author.
	Author: C.O'Neill		
	Projection: UTM NAD83 Zn10N		



Legend

- | | | |
|---------------------------------|-----------------|--|
| Invasive Species | Stream | Environmentally Sensitive Area |
| Ecological Point of Interest | Wetland | Enhancement Opportunities |
| Enhancement Opportunities Point | Parcels | Streamside Protection and Enhancement Area |
| Ditch | SD71 Boundaries | |

Project:	School District 71: Comox Valley Schools Environmental Inventory		Page 13 of 24	
			Date: March 15th, 2021	Note: All linework approximate. Not for use or reproduction without consent from the author.
Site:	Ecole Puntledge Park Elementary and Lake Trail Middle School		Author: C.O'Neill	
			Projection: UTM NAD83 Zn10N	



Source: Esri, DigitalGlobe, GeoEye, Earthstar Geographics, CNES/Airbus DS, USDA, USGS, AeroGRID, IGN, and the GIS User Community

Legend

-  Invasive Species

 Ecological Point of Interest

 Enhancement Opportunities Point

 Ditch
-  Stream


 Wetland

 Parcels

 SD71 Boundaries
-  Environmentally Sensitive Area

 Enhancement Opportunities

 Streamside Protection and Enhancement Area

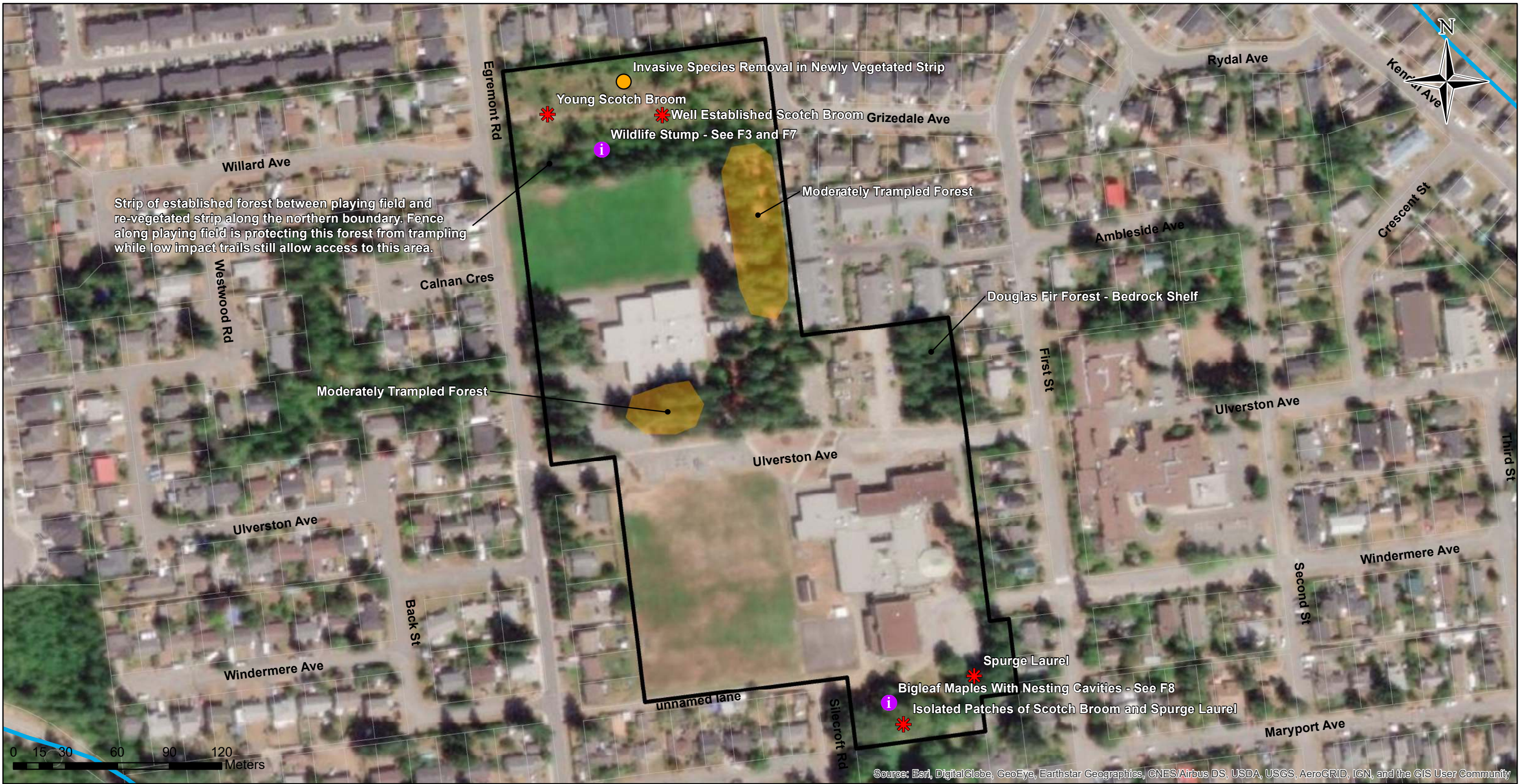
Project: <div>School District 71: Comox Valley Schools Environmental Inventory</div>		Page 14 of 24	
Site: <div>Courtenay Elementary</div>		Date: March 15th, 2021	Note: All linework approximate. Not for use or reproduction without consent from the author.
		Author: C.O'Neill	
		Projection: UTM NAD83 Zn10N	



Legend

- | | | |
|---------------------------------|-----------------|--|
| Invasive Species | Stream | Environmentally Sensitive Area |
| Ecological Point of Interest | Wetland | Enhancement Opportunities |
| Enhancement Opportunities Point | Parcels | Streamside Protection and Enhancement Area |
| Ditch | SD71 Boundaries | |

Project:	School District 71: Comox Valley Schools Environmental Inventory		Page 15 of 24	
	Site:	Arden Elementary		
		Date: March 15th, 2021	Note: All linework approximate. Not for use or reproduction without consent from the author.	
		Author: C.O'Neill		
		Projection: UTM NAD83 Zn10N		



Legend

- Invasive Species
- Ecological Point of Interest
- Enhancement Opportunities Point
- Ditch
- Stream
- Wetland
- Parcels
- SD71 Boundaries
- Environmentally Sensitive Area
- Enhancement Opportunities
- Streamside Protection and Enhancement Area

Project:

School District 71: Comox Valley Schools
Environmental Inventory

Site:

Cumberland Community School

Page 16 of 24

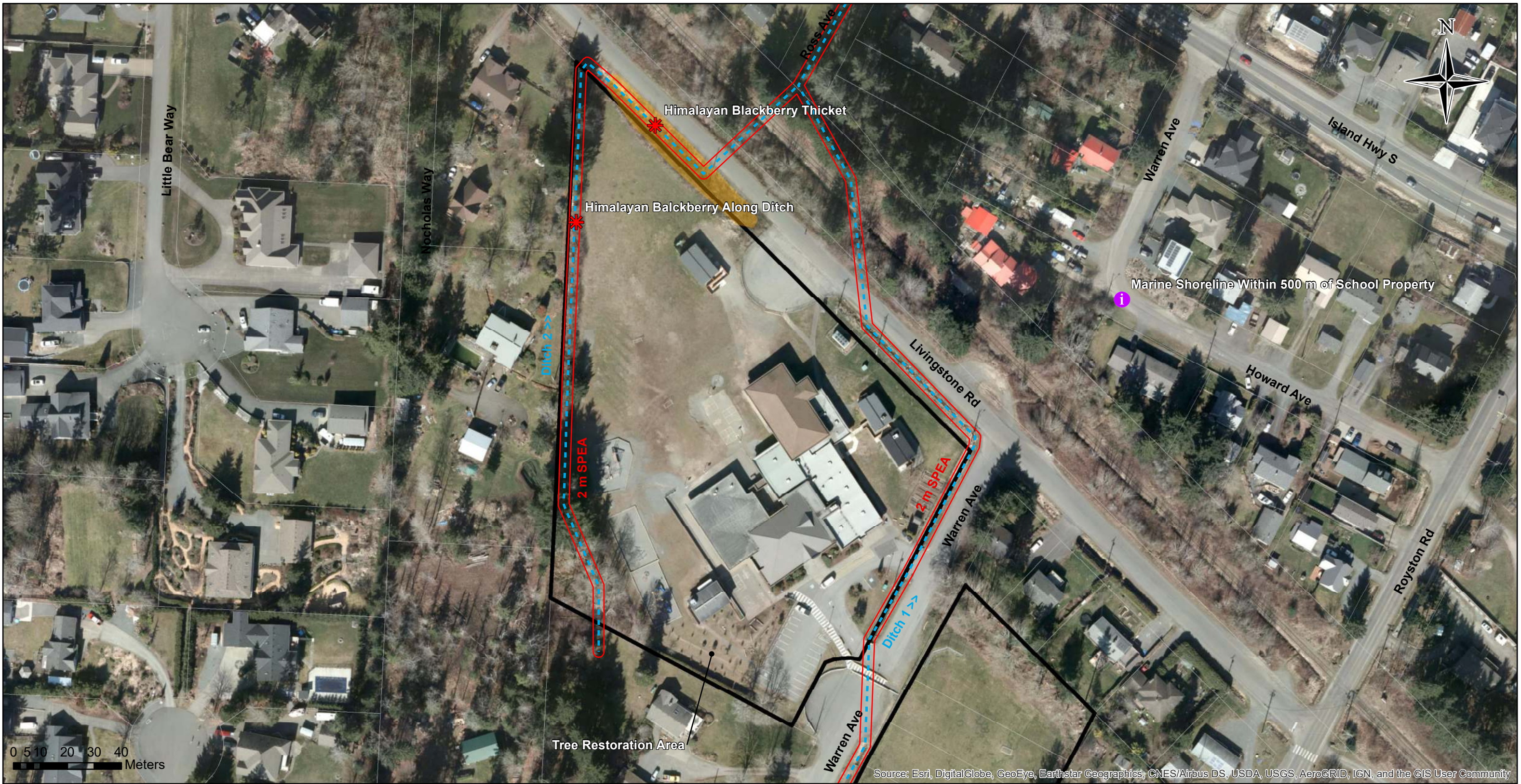
Date:
March 15th, 2021

Author:
C.O'Neill

Projection:
UTM NAD83 Zn10N

Note: All linework approximate. Not for use or reproduction without consent from the author.

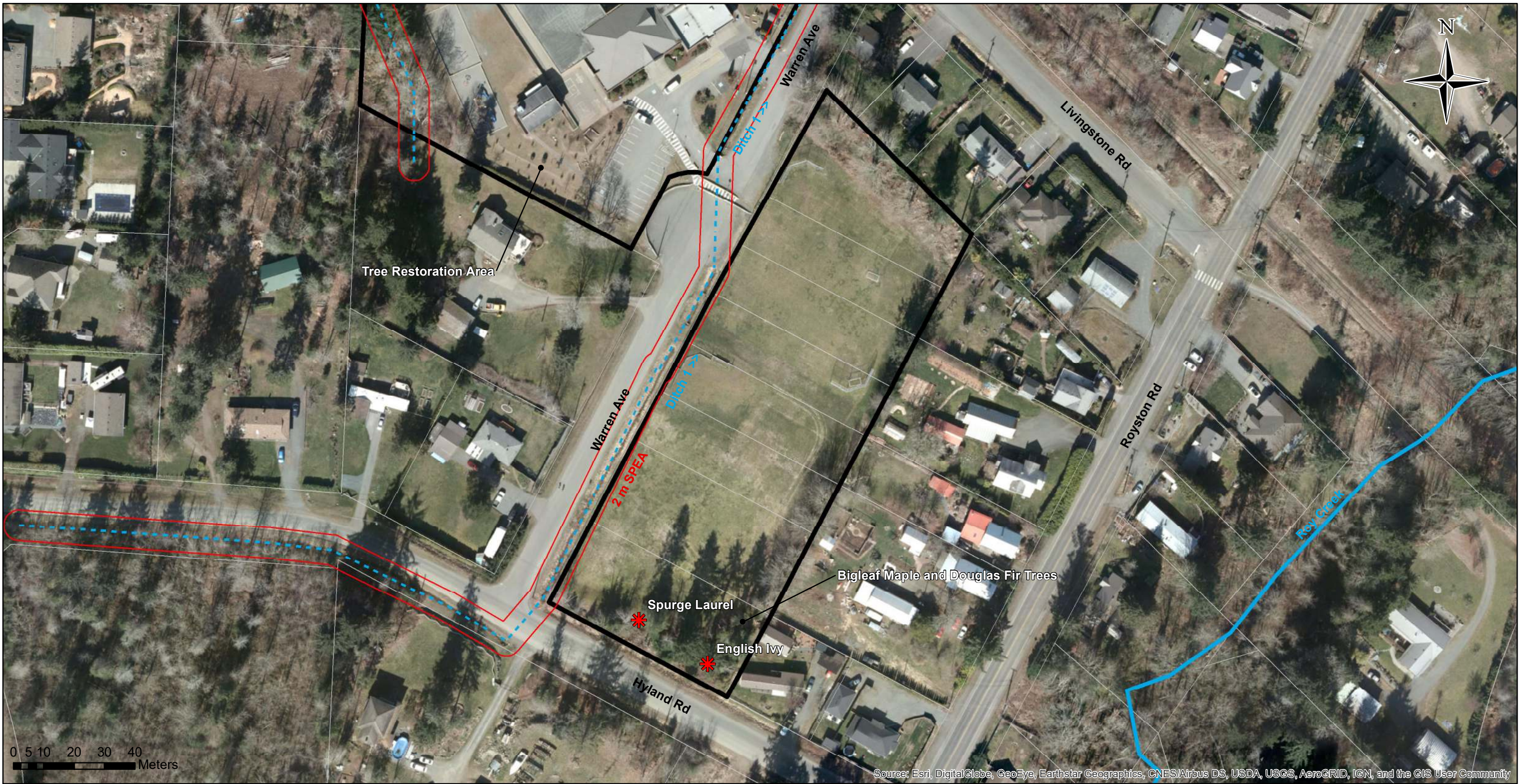




Legend


- Invasive Species
- Ecological Point of Interest
- Enhancement Opportunities Point
- Ditch
- Stream
- Wetland
- Parcels
- SD71 Boundaries
- Environmentally Sensitive Area
- Enhancement Opportunities
- Streamside Protection and Enhancement Area

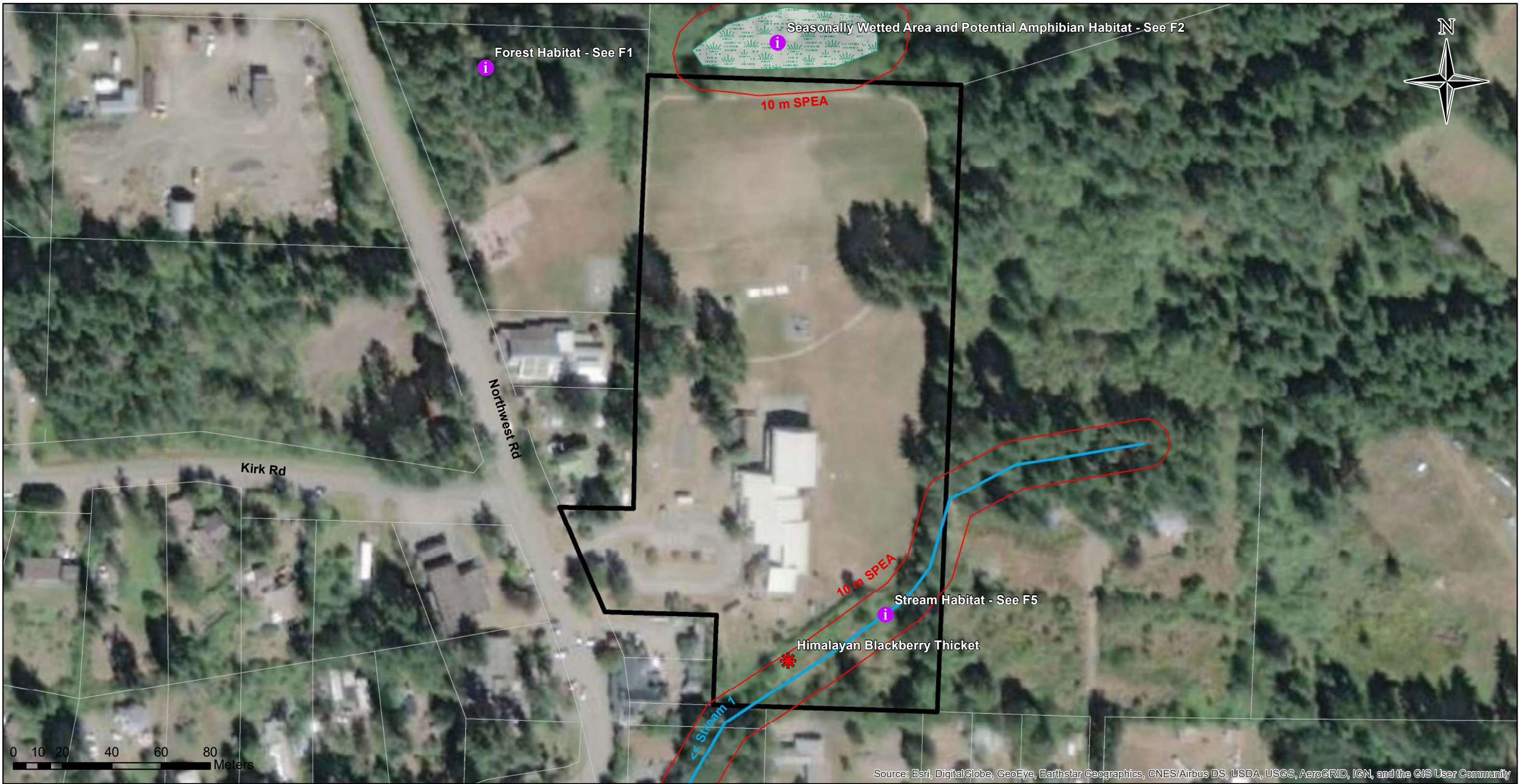
Project:		Page 17 of 24	
School District 71: Comox Valley Schools Environmental Inventory		Date: March 15th, 2021	Note: All linework approximate. Not for use or reproduction without consent from the author.
Site: Royston Elementary		Author: C.O'Neill	
		Projection: UTM NAD83 Zn10N	



Legend

- | | | |
|---------------------------------|-----------------|--|
| Invasive Species | Stream | Environmentally Sensitive Area |
| Ecological Point of Interest | Wetland | Enhancement Opportunities |
| Enhancement Opportunities Point | Parcels | Streamside Protection and Enhancement Area |
| Ditch | SD71 Boundaries | |

Project:		Page 18 of 24	
School District 71: Comox Valley Schools Environmental Inventory		Date: March 15th, 2021	Note: All linework approximate. Not for use or reproduction without consent from the author.
Site:		Author: C.O'Neill	
Field Across From Royston Elementary		Projection: UTM NAD83 Zn10N	



Legend

- Invasive Species
- Ecological Point of Interest
- Enhancement Opportunities Point
- Ditch
- Stream
- Wetland
- Parcels
- SD71 Boundaries
- Environmentally Sensitive Area
- Enhancement Opportunities
- Streamside Protection and Enhancement Area

Project:		Page 19 of 24	
School District 71: Comox Valley Schools Environmental Inventory		Date: March 15th, 2021	Note: All linework approximate. Not for use or reproduction without consent from the author.
Site:		Author: C.O'Neill	
Denman Island Community School		Projection: UTM NAD83 Zn10N	



Legend

-  Invasive Species

 Ecological Point of Interest

 Enhancement Opportunities Point

 Ditch
-  Stream


 Wetland

 Parcels

 SD71 Boundaries
-  Environmentally Sensitive Area

 Enhancement Opportunities

 Streamside Protection and Enhancement Area

Project: <div>School District 71: Comox Valley Schools Environmental Inventory</div>		Page 20 of 24	
Site: <div>Hornby Island Elementary</div>		Date: March 15th, 2021	Note: All linework approximate. Not for use or reproduction without consent from the author.
		Author: C.O'Neill	
		Projection: UTM NAD83 Zn10N	



Source: Esri, DigitalGlobe, GeoEye, Earthstar Geographics, CNES/Airbus DS, USDA, USGS, AeroGRID, IGN, and the GIS User Community

Legend

- Invasive Species

Ecological Point of Interest

Enhancement Opportunities Point

Ditch
- Stream

Wetland

Parcels

SD71 Boundaries
- Environmentally Sensitive Area

Enhancement Opportunities

Streamside Protection and Enhancement Area

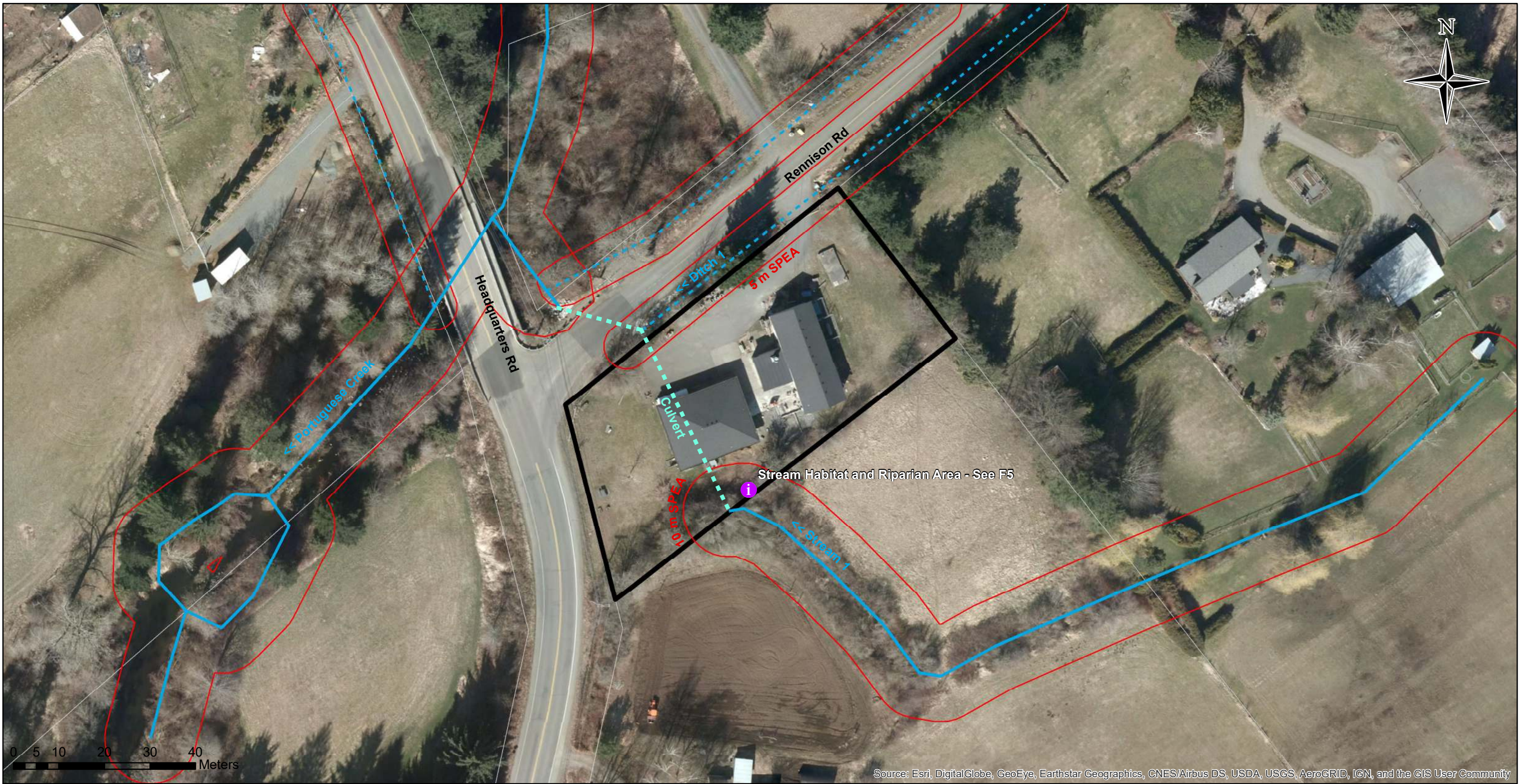
Project: <div>School District 71: Comox Valley Schools Environmental Inventory</div>		Page 21 of 24	
Site: <div>Comox Elementary - Not In Use</div>		Date: <div>March 15th, 2021</div>	Note: All linework approximate. Not for use or reproduction without consent from the author.
		Author: <div>C.O'Neill</div>	
		Projection: <div>UTM NAD83 Zn10N</div>	



Legend


- Invasive Species
- Ecological Point of Interest
- Enhancement Opportunities Point
- Ditch
- Stream
- Wetland
- Parcels
- SD71 Boundaries
- Environmentally Sensitive Area
- Enhancement Opportunities
- Streamside Protection and Enhancement Area

Project:	School District 71: Comox Valley Schools Environmental Inventory		Page 22 of 24	
	Site:	Union Bay School - Not In Use	Date: March 15th, 2021	Note: All linework approximate. Not for use or reproduction without consent from the author.
			Author: C.O'Neill	
			Projection: UTM NAD83 Zn10N	



Legend

- | | | |
|---------------------------------|-----------------|--|
| Invasive Species | Stream | Environmentally Sensitive Area |
| Ecological Point of Interest | Wetland | Enhancement Opportunities |
| Enhancement Opportunities Point | Parcels | Streamside Protection and Enhancement Area |
| Ditch | SD71 Boundaries | |

Project:		Page 23 of 24	
School District 71: Comox Valley Schools Environmental Inventory		Date: March 15th, 2021 Author: C.O'Neill Projection: UTM NAD83 Zn10N	Note: All linework approximate. Not for use or reproduction without consent from the author.
Site: Sandwich Technical Education Project			



Legend

-  Invasive Species

 Ecological Point of Interest

 Enhancement Opportunities Point

 Ditch
-  Stream

 Wetland

 Parcels

 SD71 Boundaries
-  Environmentally Sensitive Area

 Enhancement Opportunities

 Streamside Protection and Enhancement Area

Project:	School District 71: Comox Valley Schools Environmental Inventory		Page 24 of 24	
Site:	Atlas Road Property		Date: March 15th, 2021	Note: All linework approximate. Not for use or reproduction without consent from the author.
			Author: C.O'Neill	
			Projection: UTM NAD83 Zn10N	