

West Coast



Tree

ADST Project



Comox Valley Schools

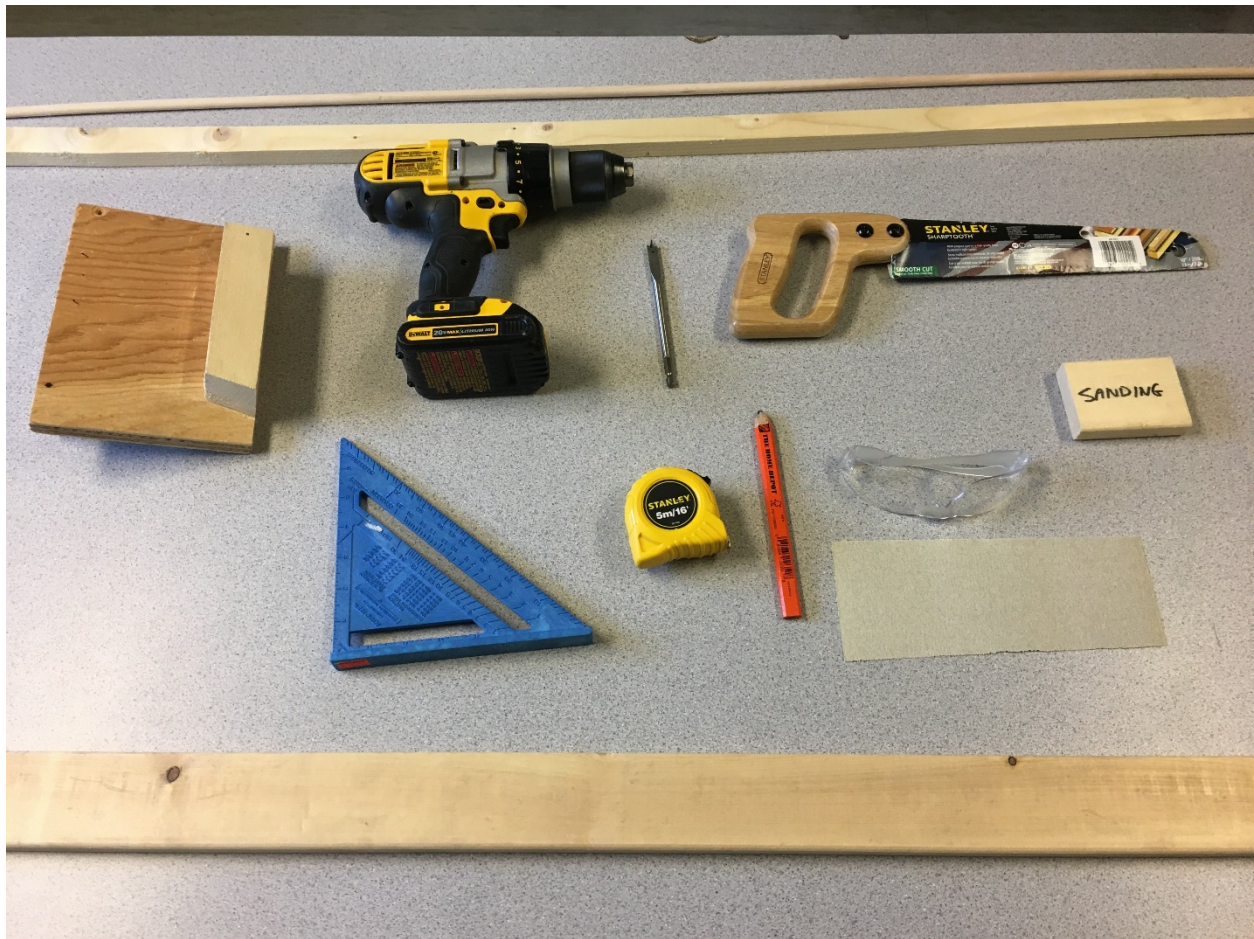
A Community of Learners

INNOVATIVE • INQUISITIVE • INCLUSIVE

Wooden Christmas Trees are a great ADST project for students in grades 4-7.

The first thing that you will need to do as a teacher is get trained in using your Toolbox & Maker Cart. Once you are Safe and Certified you will need to do an inventory on your Toolbox and your Maker Cart. Each cart and your 12 kits have master lists of what should be in them. If you are not sure or if you will need additional resources, please contact your District Careers Coordinator and they will be able to help you, Dawn.Anderson@sd71.bc.ca or Steve.Claassen@sd71.bc.ca

For this project you will need the following items:



1. 3/8" Doweling
2. Hand saw
3. Measuring Tape
4. Speed Square
5. Spade Drill Bit
6. 1 x 3" Wood
7. Drill
8. Safety Glasses
9. Sanding Block
10. Sandpaper
11. 1/2" wood strip

Once you have everything you are ready to start your project, don't forget to put on your safety glasses!

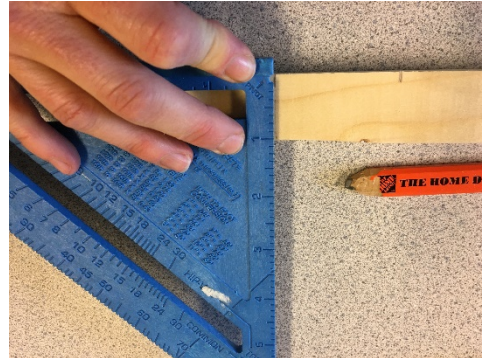
Step 1:

- The first thing that you are going to do is measure out all the wood pieces that you will need to build your project. For this you will need your:

1. Hand Saw
2. Speed square
3. Pencil
4. Measuring tape

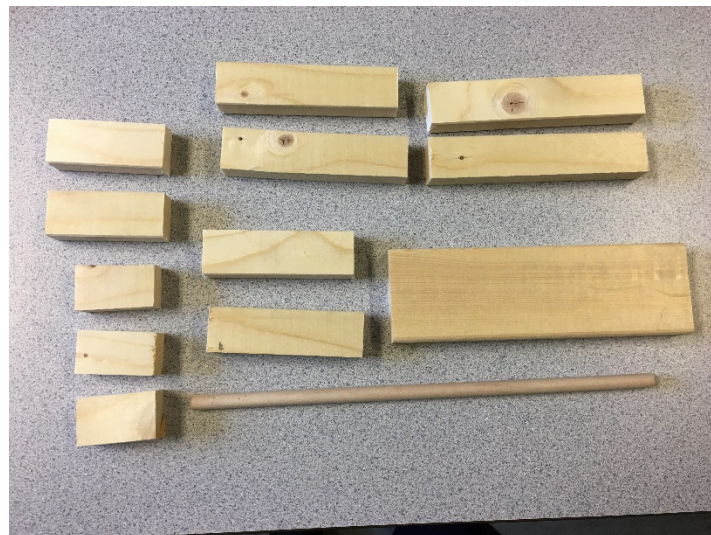
- Using your 1 ½" strip of wood, you will measure out the following lengths:

1. 3 x 2"
2. 2 x 3"
3. 2 x 4"
4. 2 x 5"
5. 2 x 6"



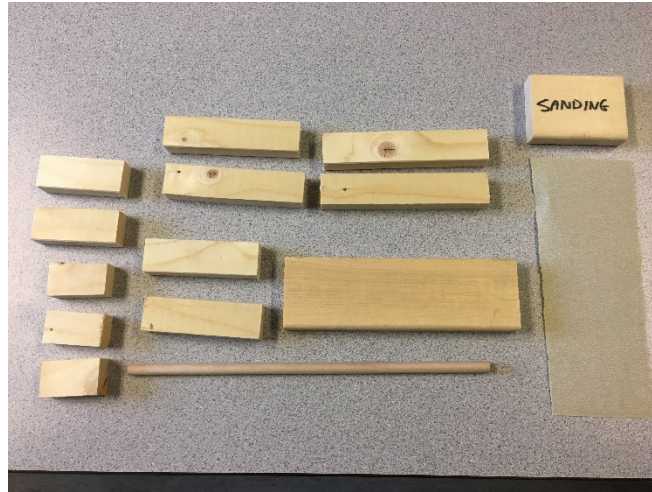
These will be the tree branches

- Taking your doweling, you will measure out a 9 ½" length piece, which will be the trunk of the tree.
- Taking your 1 x 3" piece of wood, you will measure out a 6" length piece of wood. This will be the tree stand.
- You should have all the pieces outlined in the picture below once you are done cutting.



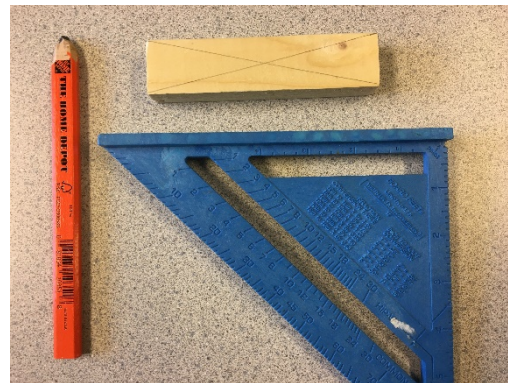
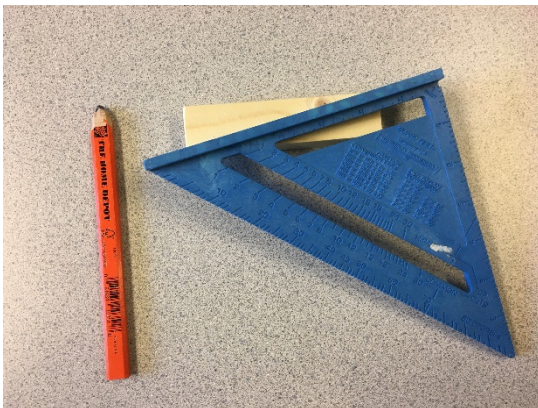
STEP 2:

- Next you will want to sand the edges of your wood pieces so that they are smooth. You may take your sandpaper and wrap it around your sanding block with your hand. Then sand your blocks until they are rounded on the edges or just smooth.

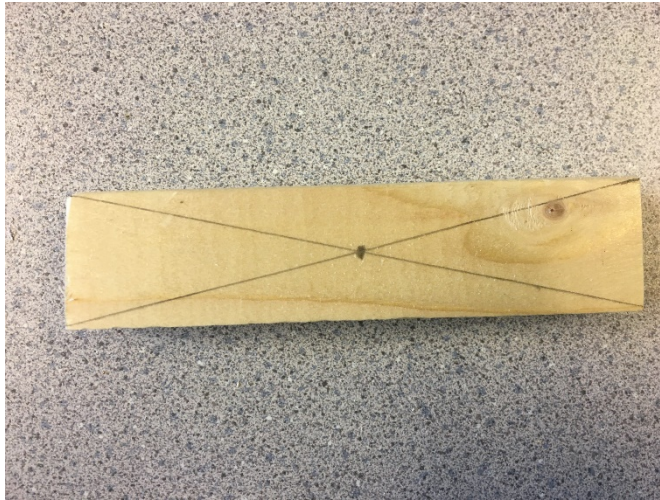


Step 3:

- Once your pieces are smooth you will need to locate the middle point of each piece of wood as we are going to drill through each piece using the spade bit and drill. To find the mid point of each piece you can take your speed square and use it like a ruler by placing it on one corner and across to the far corner. Then using your pencil draw a line across to the far corner. You will do this on each of the top corners, when done you should have an X across your wood.

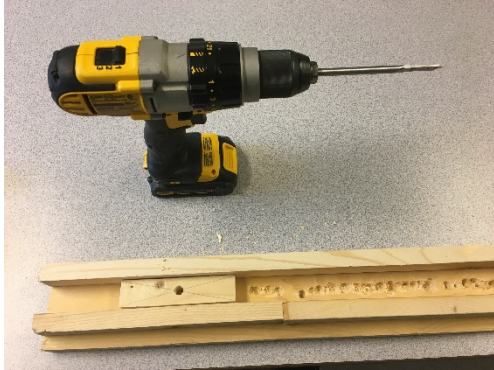


- The X marks the mid point of your wood.

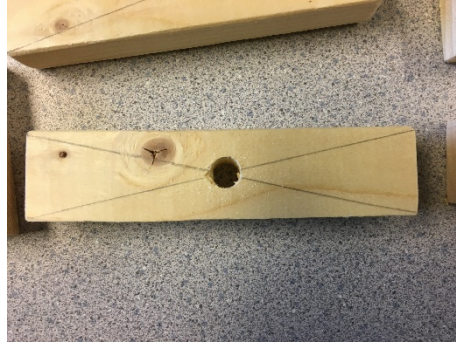


Step 4:

- Once you have the mid point of your line, you will use the jig provided so that you can drill holes through your wood pieces. For this you will need your drill and your 3/8" spade bit.
- Place the first wood bit in your jig and then place the point of the spade bit on the X and slowly drill a hole through your wood. Drill all the way through but try not to drill too far into the jig. You can feel when it goes through. Once through, place the drill in reverse and pull it back out.



- Repeat for all 1 ½" wood pieces.

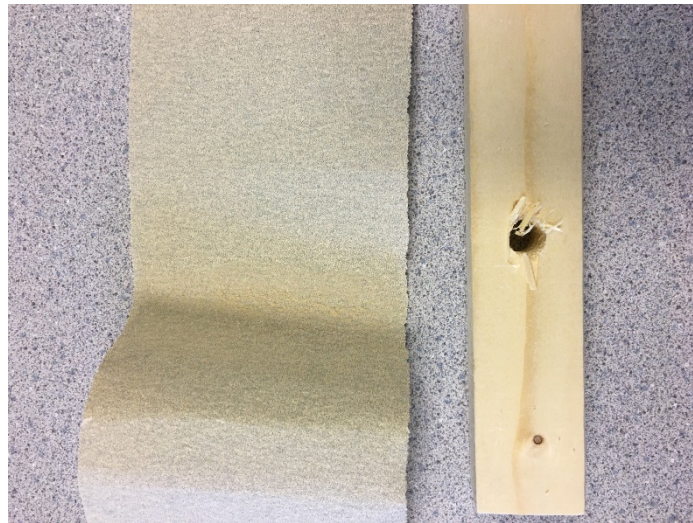


Step 5:

- For the 1 x 3" wood base, place it on a 4 x 4 so that you don't drill into your table and then using your drill and spade bit, drill a hole all the way through this piece, just like you did for the wood strips.

Step 6:

- Using your sandpaper, sand away any snagged bit of wood from around your holes so that they are nice and smooth.



Step 7:

- The last thing that you will need to do is sand down your doweling as your doweling is 3/8" in diameter and your drilled holes are also 3/8" in diameter. Once you sand your doweling down a little your wood pieces should slide on easily.

Step 8:

- Place your base piece of wood on the ground and slide your doweling into the hole
- Next, slide on one 2" long piece of wood.
- Then slide on the 2, 6" pieces, 5" pieces, 4" pieces, 3" pieces and 2" pieces.
- Your tree should now be complete!

Congratulations, you should now have a beautiful West Coast Christmas Tree. You may paint, stain, leave raw and or decorate in any fashion desired!

